

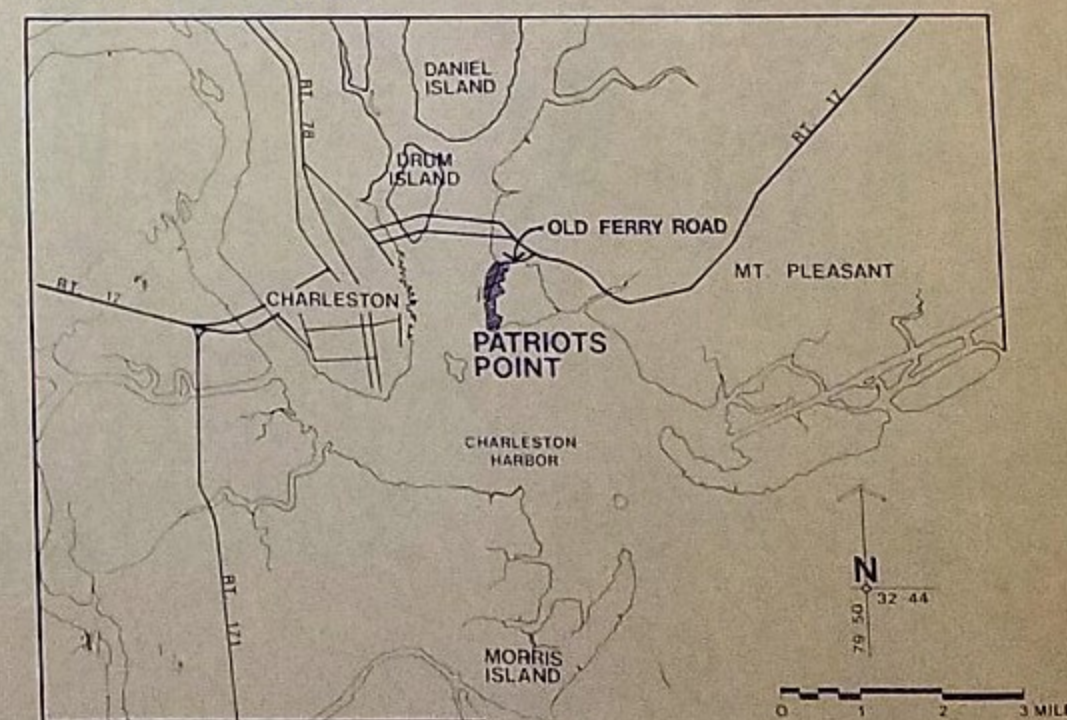
PATRIOTS POINT

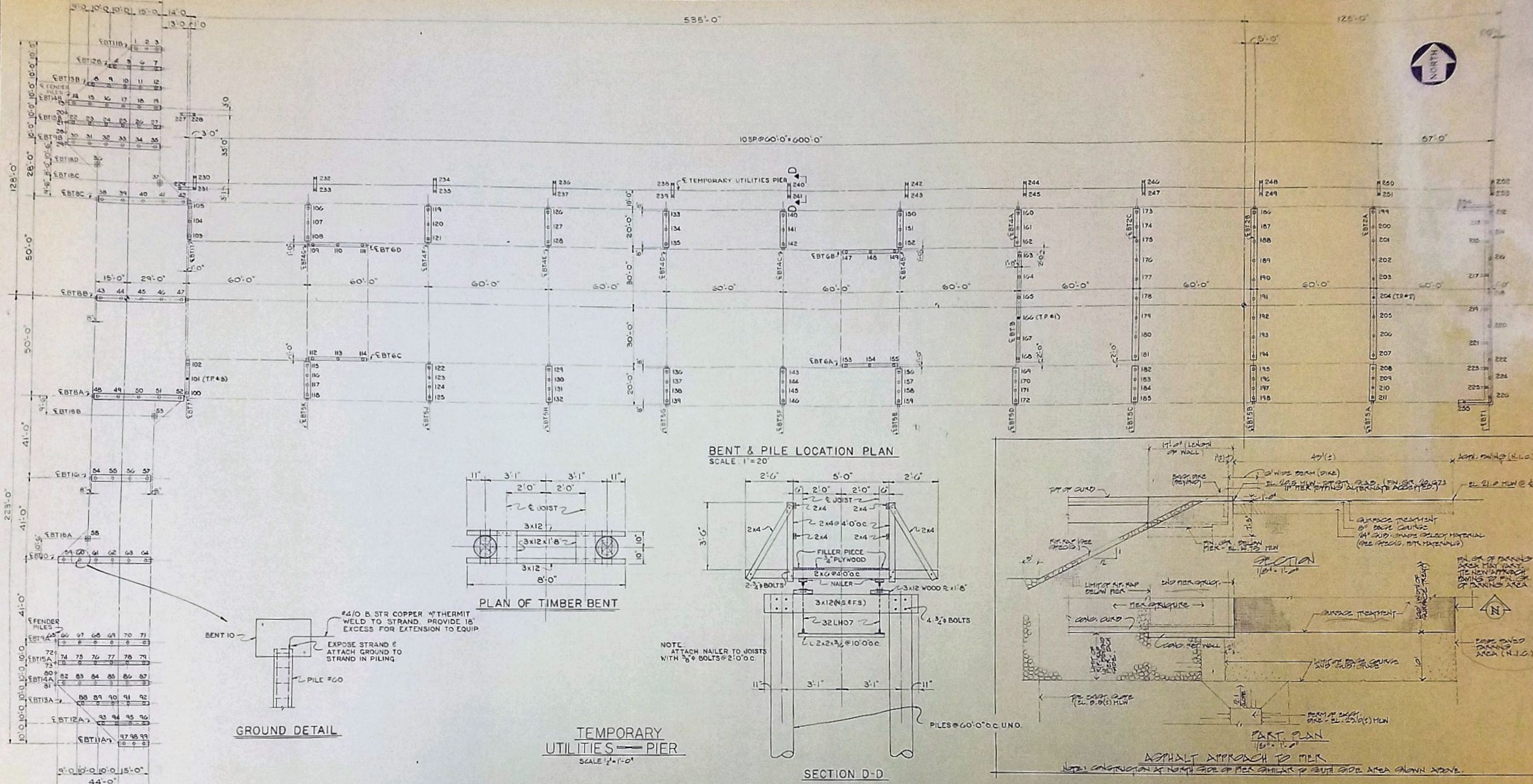
PIER & APPURTENANCES

DRAWINGS

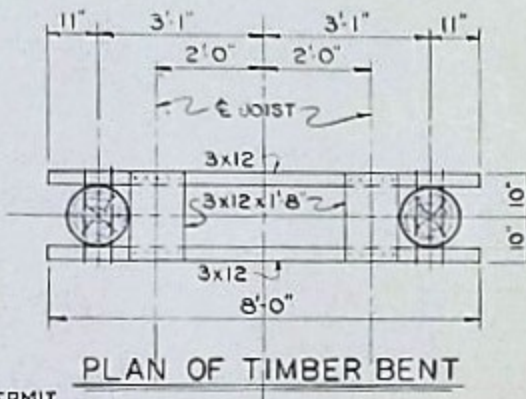
- | | |
|--|---|
| 1. PLAN & PROFILE | E1. ELECTRICAL- PLAN & DETAILS |
| 2. BENT & PILE LOCATION PLAN | B1. BORING LOCATION PLAN |
| 3. PLAN & DETAILS - BENT BT-1 | |
| 4. PLANS & DETAILS - BENTS BT-2 THRU BT-7 | |
| 5. PLANS & DETAILS - BENTS BT-8 THRU BT-13 | 1G. SITE PLAN (GENERAL USE ONLY) |
| 6. PLANS & DETAILS - BENTS BT-14 THRU BT-18 | 2G. BERTHING PLAN AND SECTIONS (GENERAL USE ONLY) |
| 7. PLANS & DETAILS - SPANS SP-A1 THRU SP-A4 | |
| 8. PLANS & DETAILS - SPANS SP-B1 THRU SP-C7 | |
| 9. PLANS & DETAILS - SPANS SP-D1 & SP-D2 | |
| 10. PLANS & DETAILS - SPANS SP-E1 THRU SP-G1 | |
| 11. PLAN - SPANS SP-H1 & SP-J1 | |
| 12. PLANS & DETAILS - SPANS SP-K1 THRU SP-L1 | |
| 13. MISC. DETAILS | |
| 14. PIPING DETAILS | |

VICINITY MAP

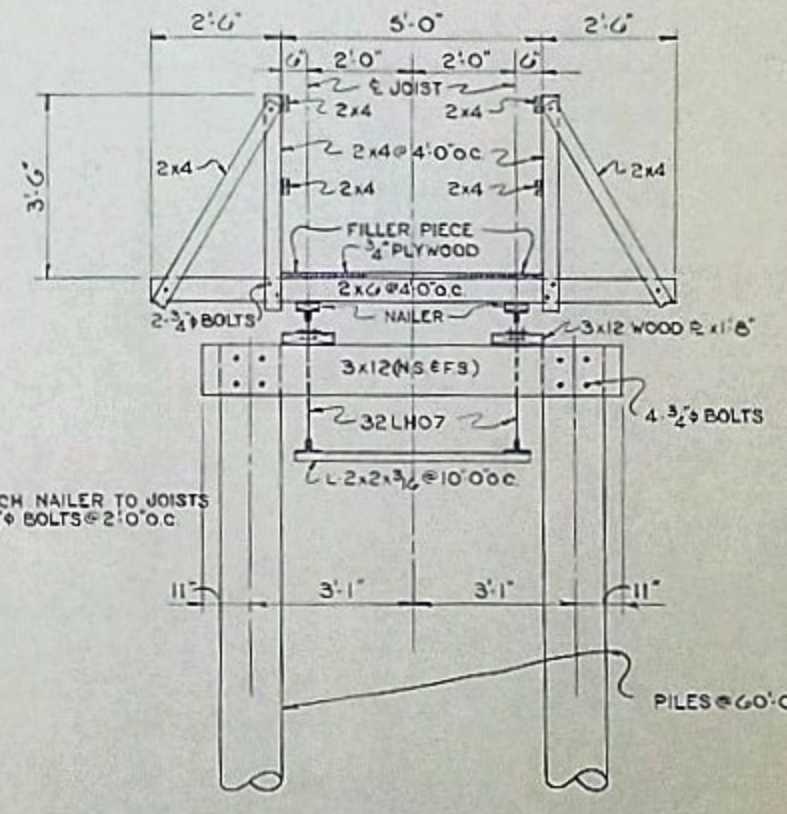




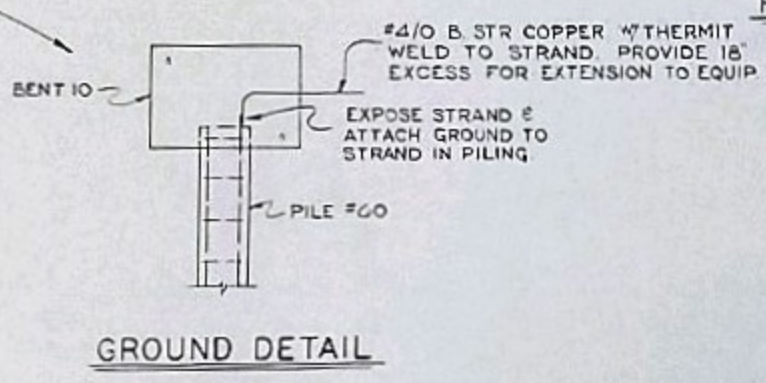
BENT & PILE LOCATION PLAN
SCALE: 1" = 20'



PLAN OF TIMBER BENT

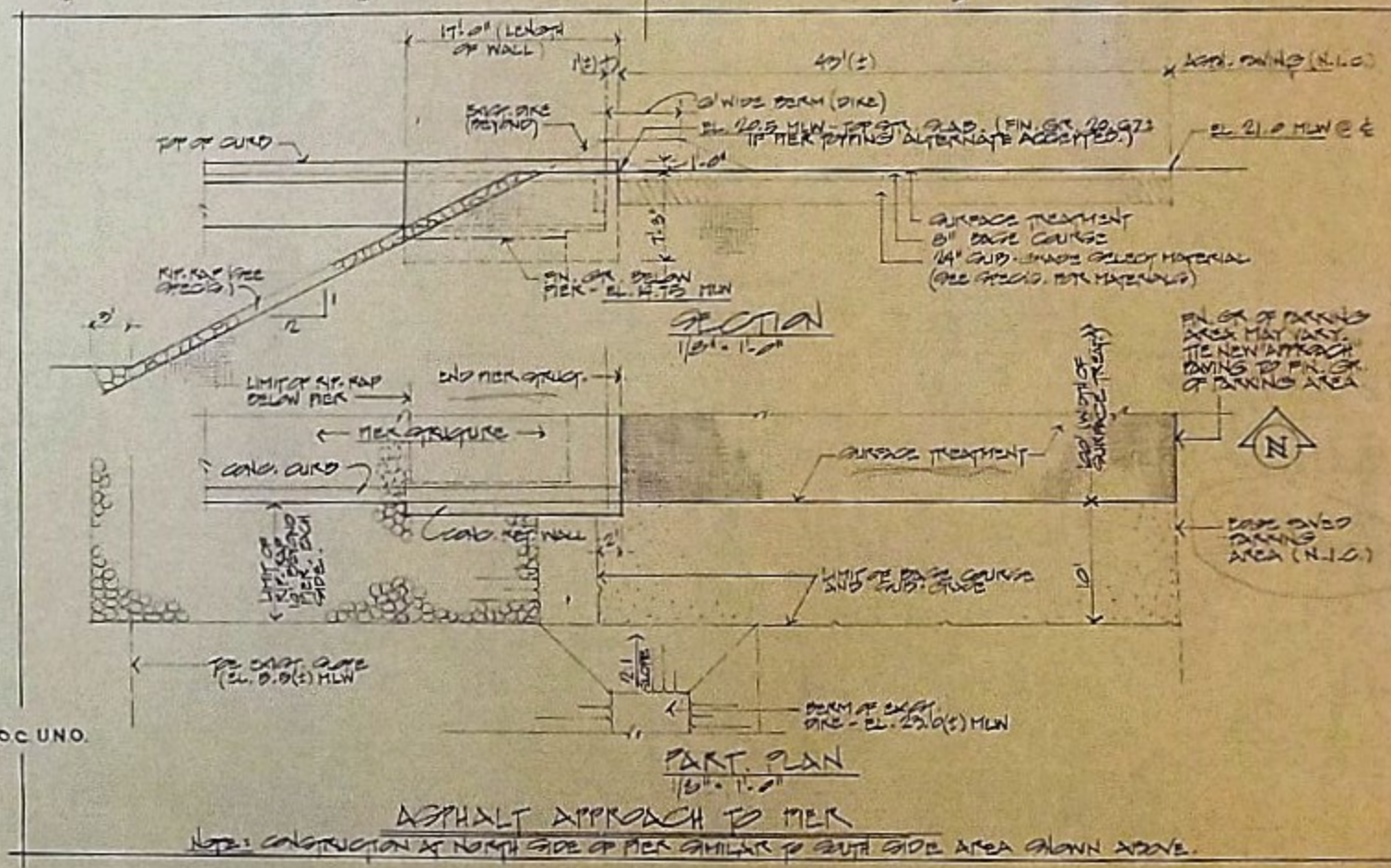


SECTION D-D
PILES @ 60'-0" O.C. UNO.

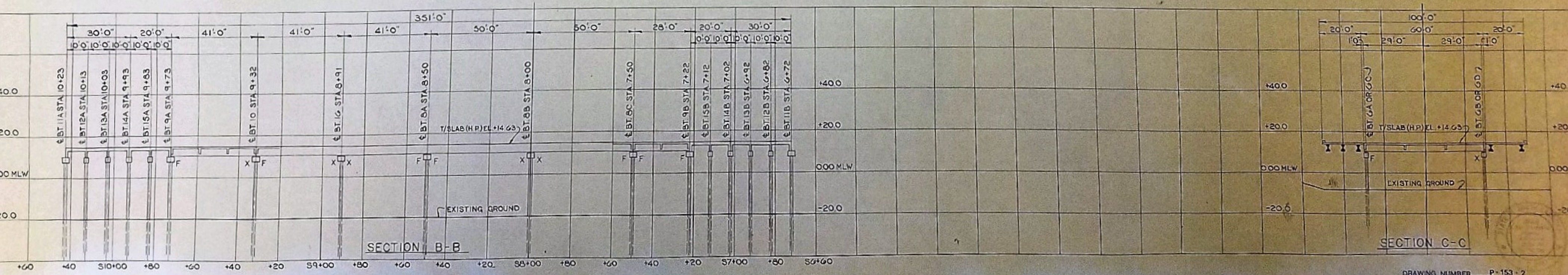


GROUND DETAIL

TEMPORARY UTILITIES PIER
SCALE: 1" = 1'-0"



PART PLAN
ASPHALT APPROACH TO PIER



SECTION B-B

SECTION C-C

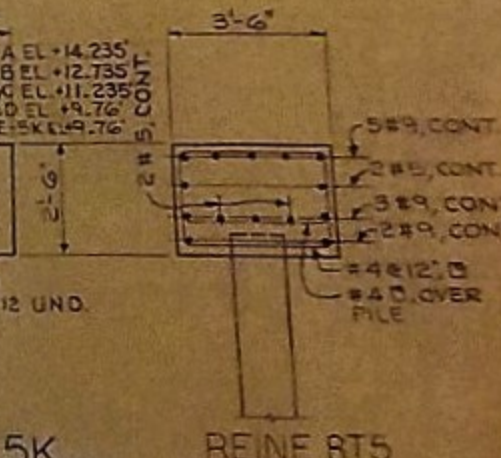
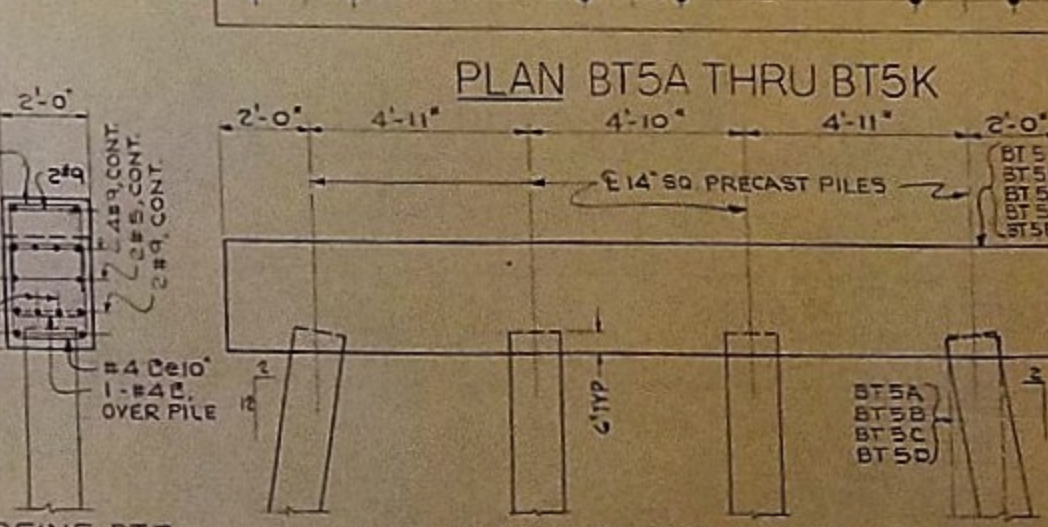
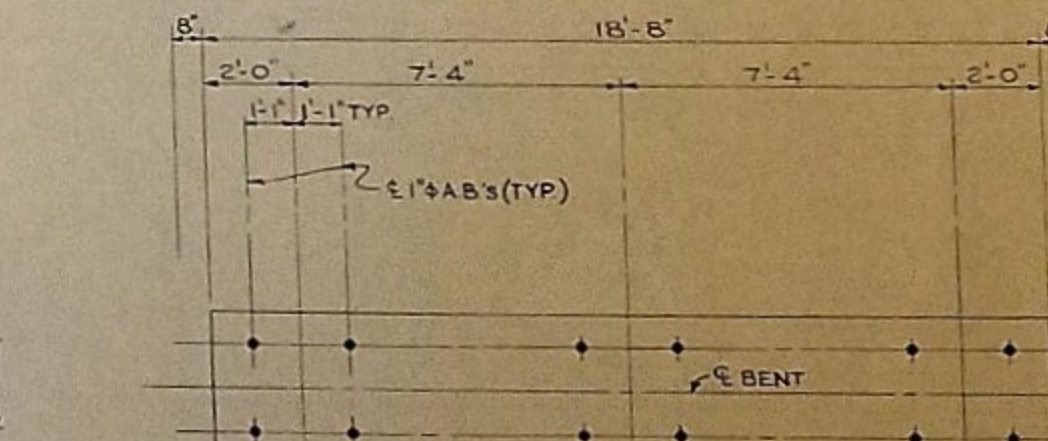
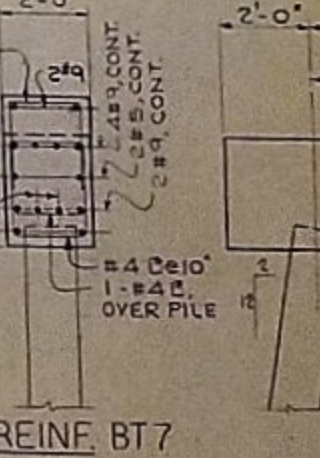
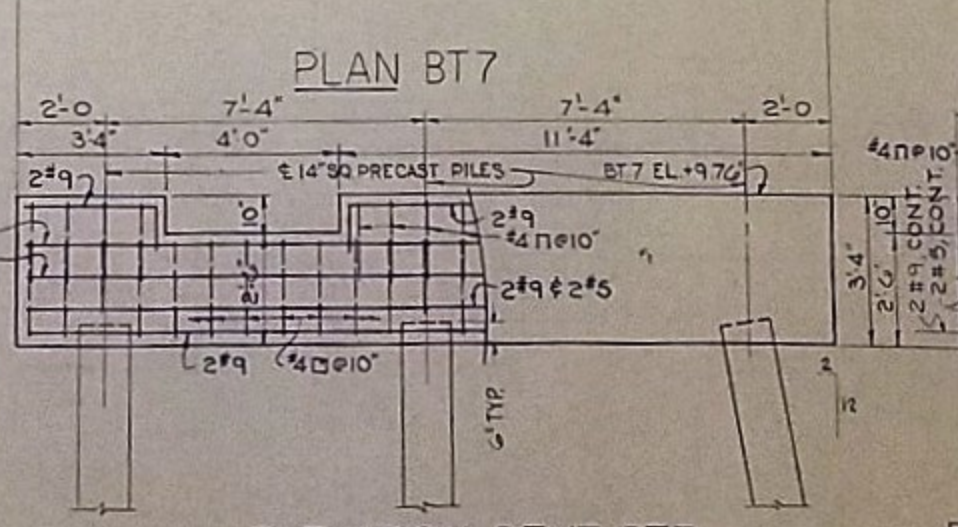
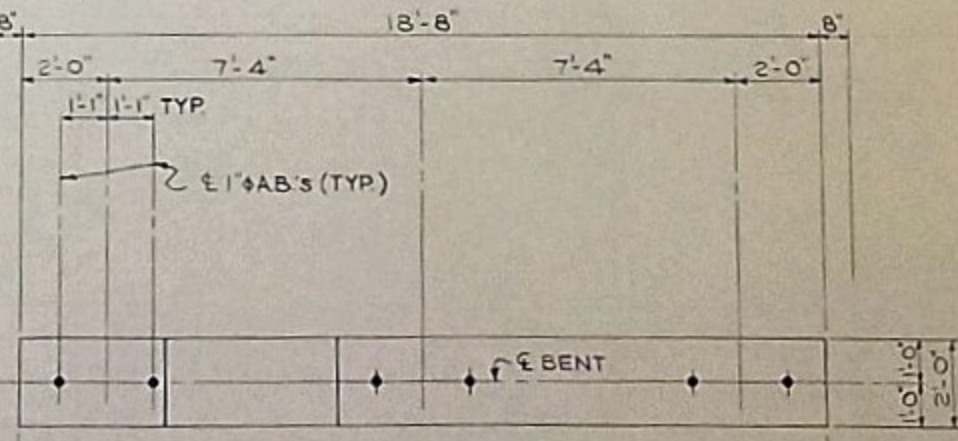
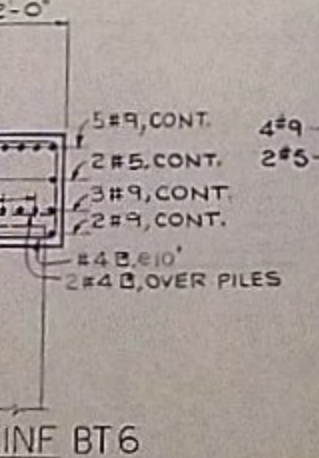
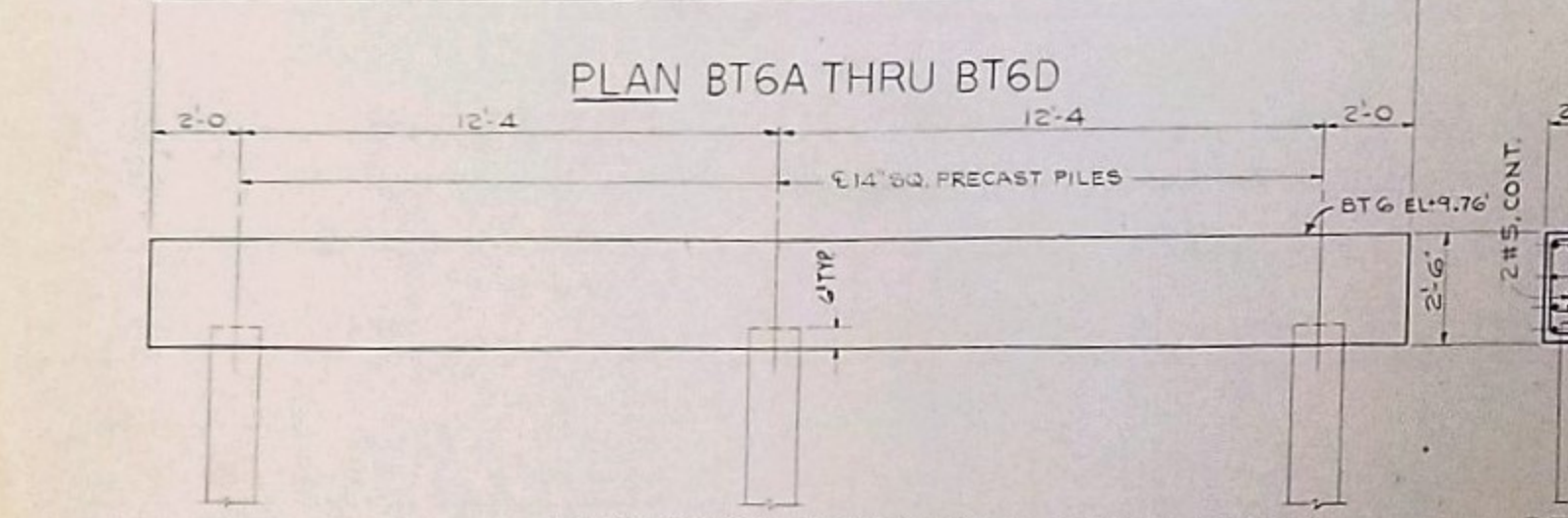
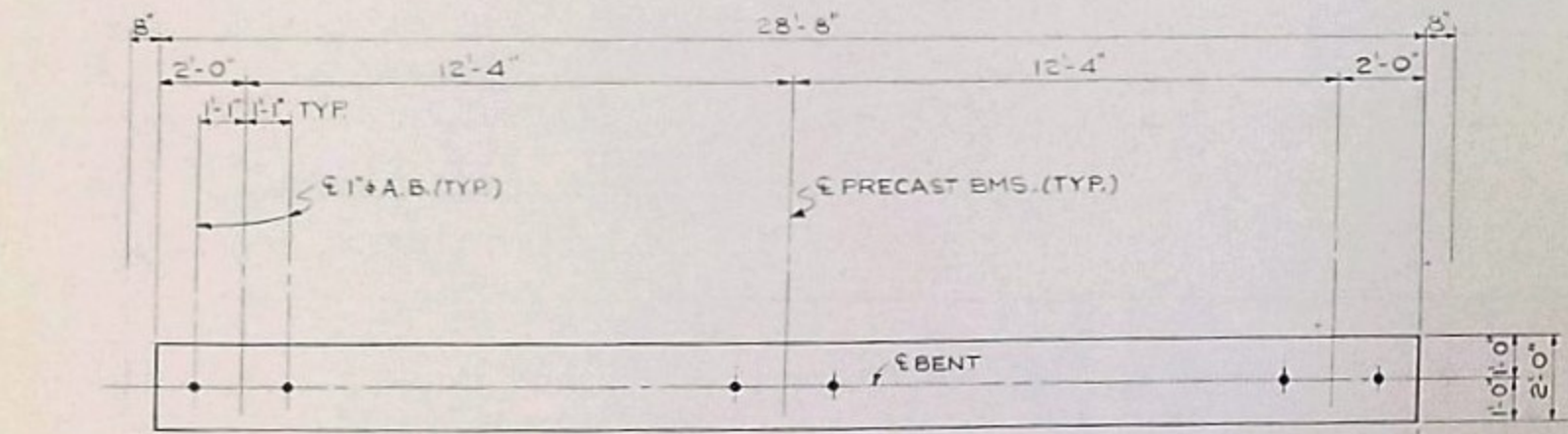
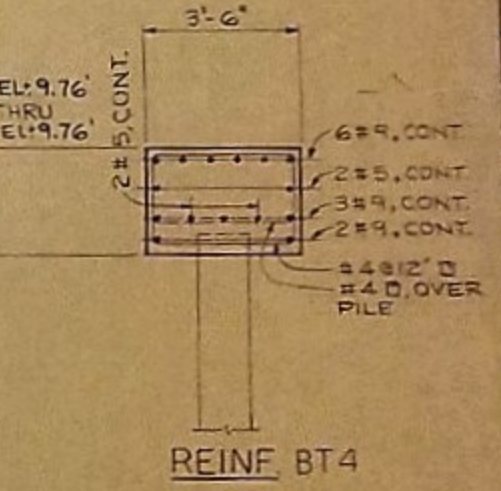
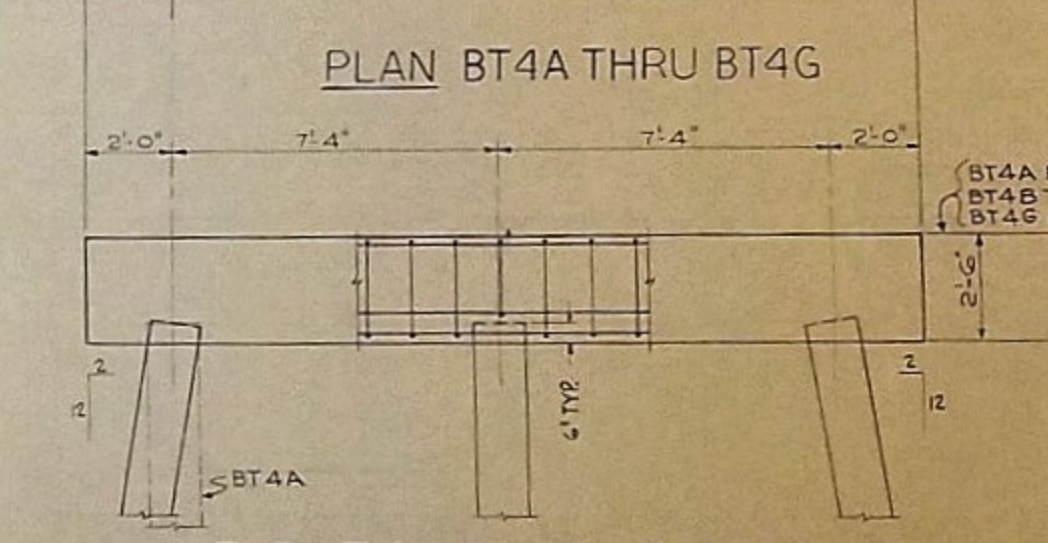
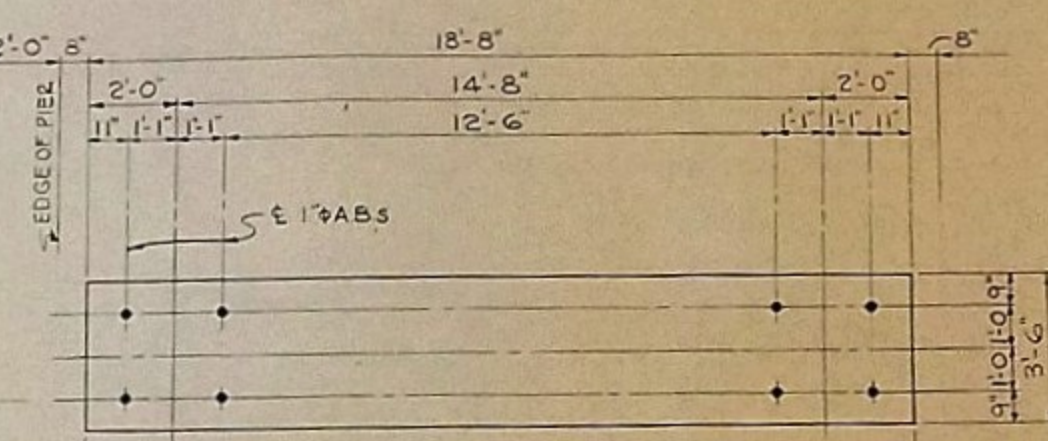
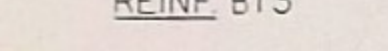
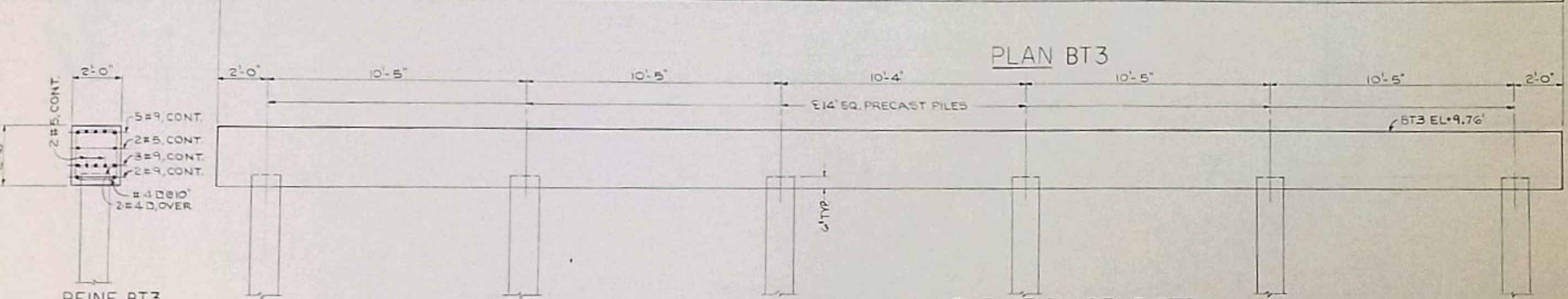
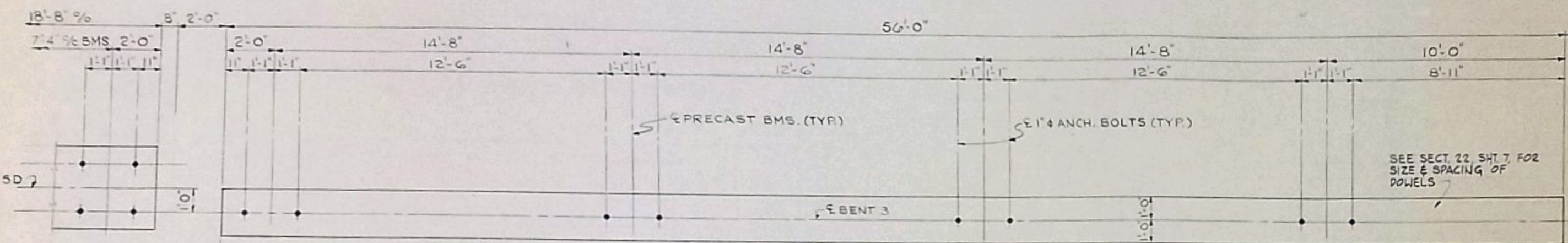
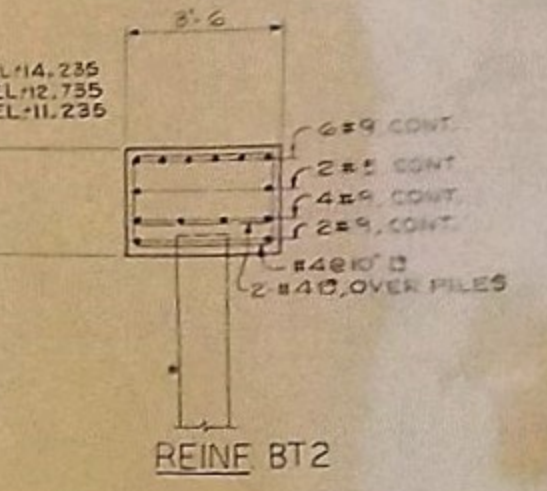
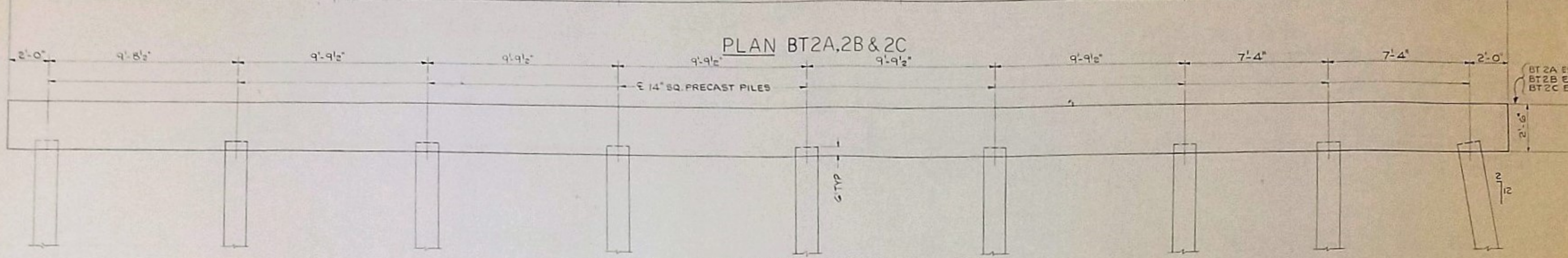
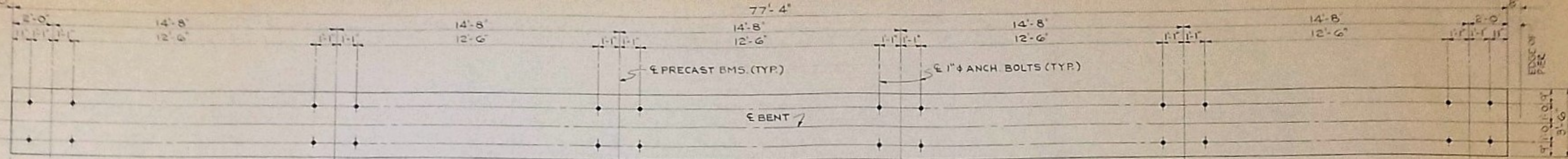
REVISIONS	DESCRIPTION	BY	APP.	LOCATION	DATE	BY	APP.	APPROVALS

PROJECT ARCHITECT	ARCHITECTURAL DESIGN	ENGINEER	CHECKED BY	DATE
J.L. SUDDETH, P.E.	H.D. SIMMONS, AIA	J.L.S.	J.L.S.	

LBC&W SOUTH CAROLINA
 ENGINEERING ARCHITECTURE PLANNING
 600 EAST BROADWAY, COLUMBIA, SOUTH CAROLINA 29201 • 803-775-3888

PATRIOT'S POINT
 CHARLESTON, SOUTH CAROLINA
 DATE: 28 FEB. 1975 FILE NO. P-153

BENT & PILE LOCATION PLAN
 DRAWING NUMBER: P-153-2 SHEET: 2



REVISIONS	APPROVALS	PROJECT ARCHITECT	ARCHITECTURAL DESIGN	ENGINEER	DESIGNER	DATE	BY	APP.
		J.L. SUDDETH, P.E.	H.D. SIMMONS, AIA					
		J.W.J.						

LBC&W SOUTH CAROLINA

ARCHITECTS

400 WEST BROAD STREET, SUITE 1000

COLUMBIA, SOUTH CAROLINA 29202 • 803-779-3888

PATRIOT'S POINT

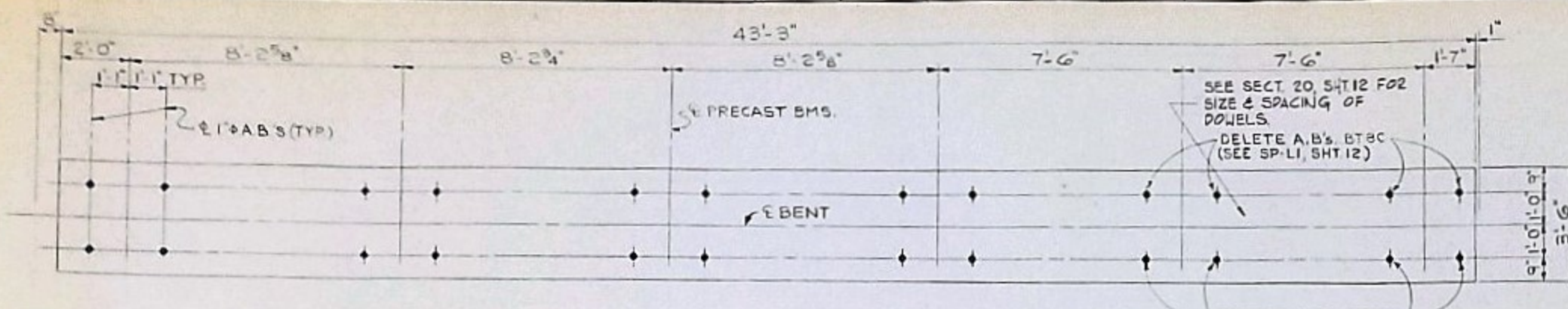
CHARLESTON, SOUTH CAROLINA

DATE: 28 FEB 1975

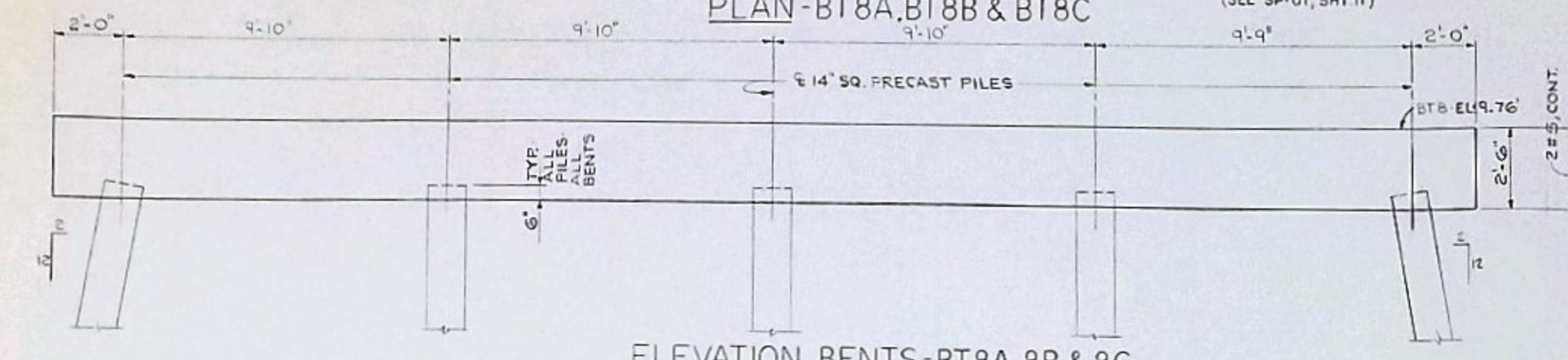
DRAWING NO. TR. P-153-4

SHEET TITLE: **PLANS & DETAILS BENTS BT 2 THRU BT 7**

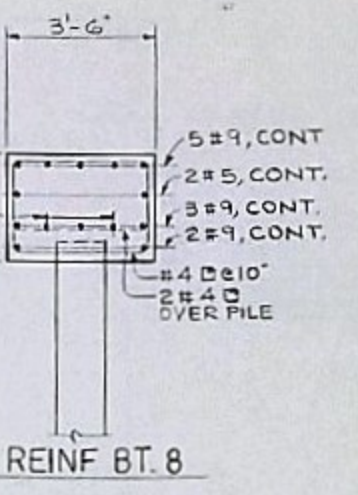
SHEET NO. **4**



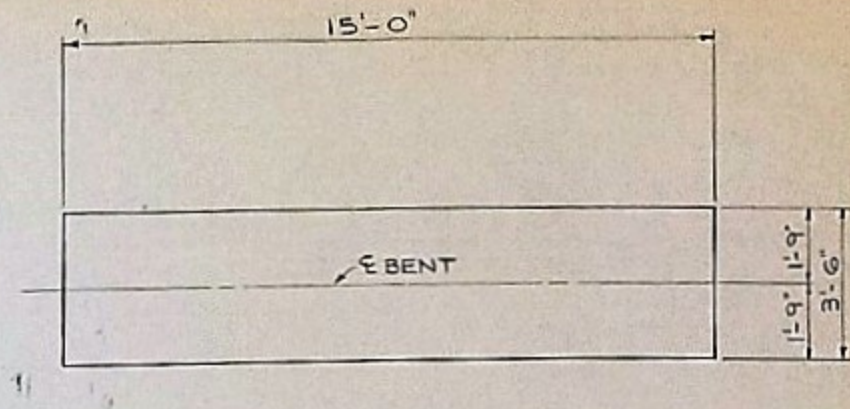
PLAN-BT8A, BT8B & BT8C



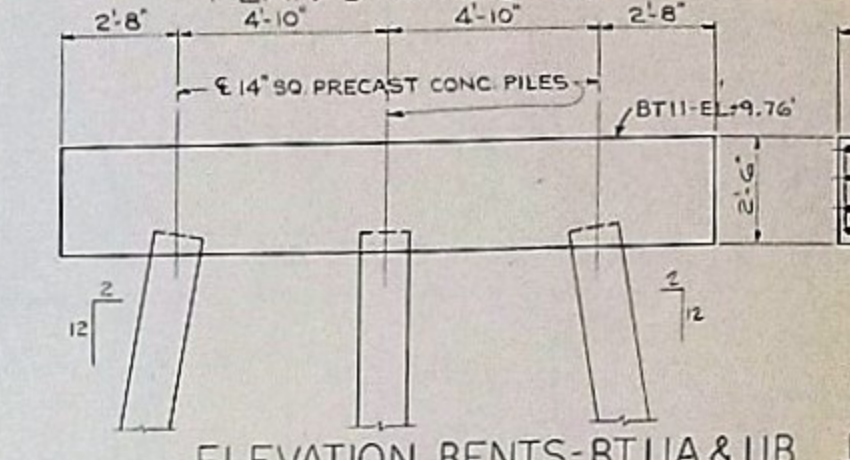
ELEVATION BENTS-BT8A, 8B & 8C



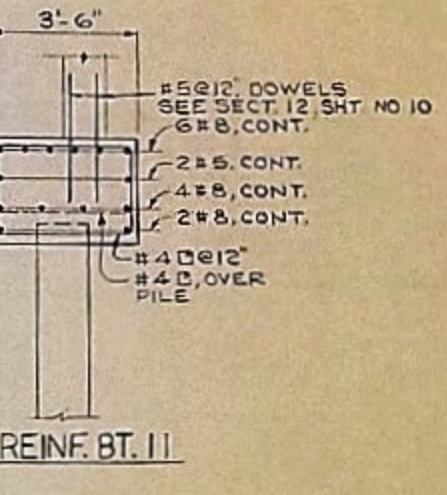
REINF. BT. 8



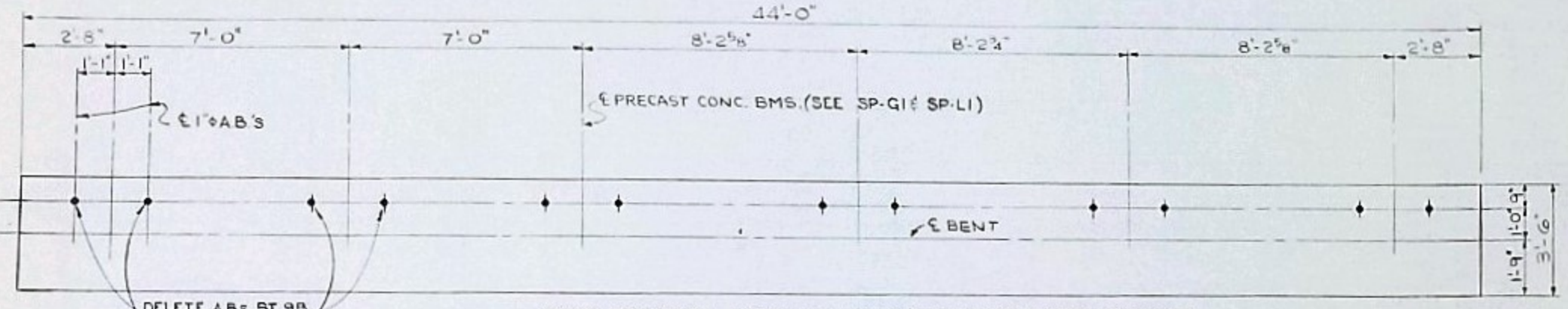
PLAN-BT11A & BT11B



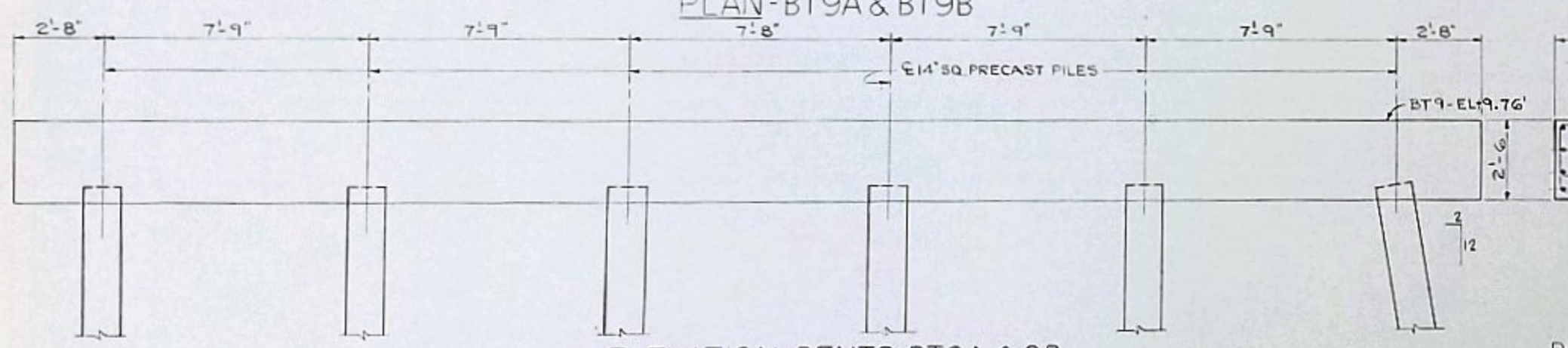
ELEVATION BENTS-BT11A & 11B



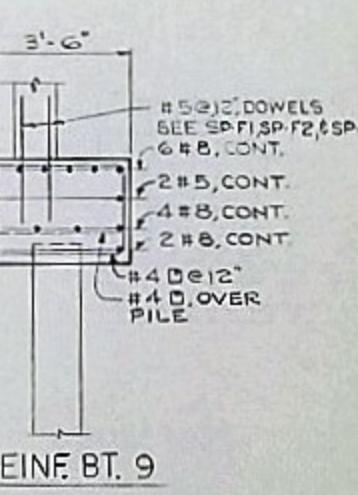
REINF. BT. 11



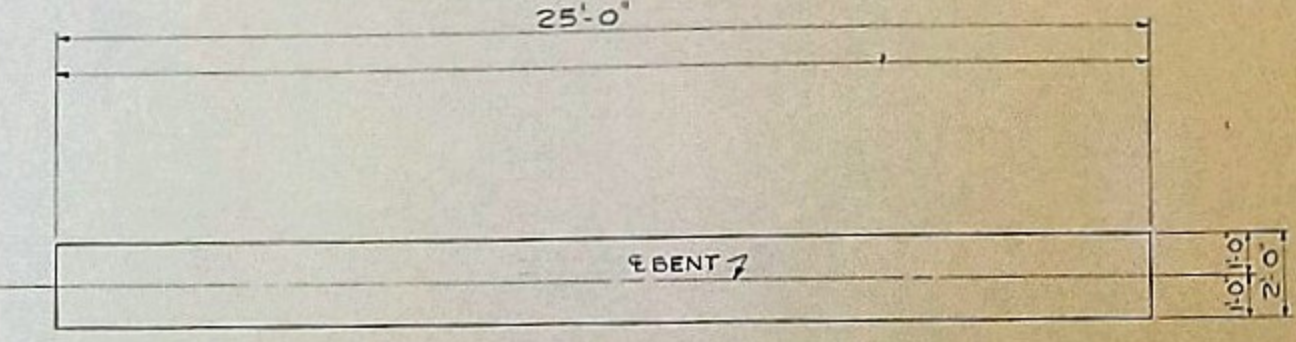
PLAN-BT9A & BT9B



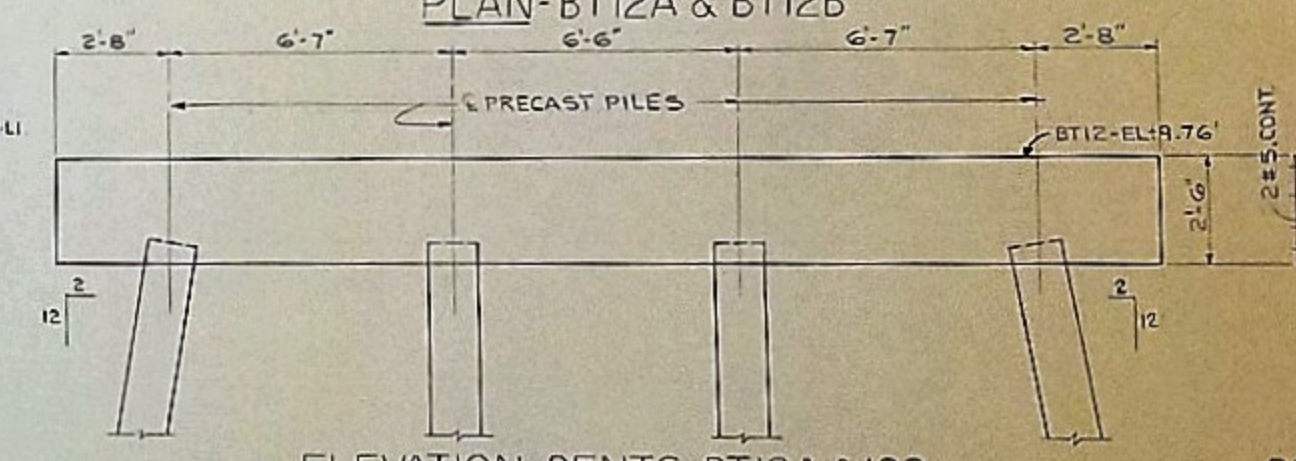
ELEVATION BENTS-BT9A & 9B



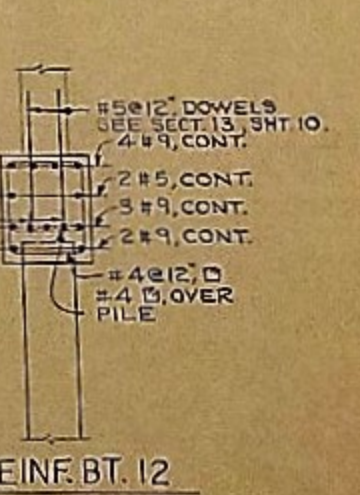
REINF. BT. 9



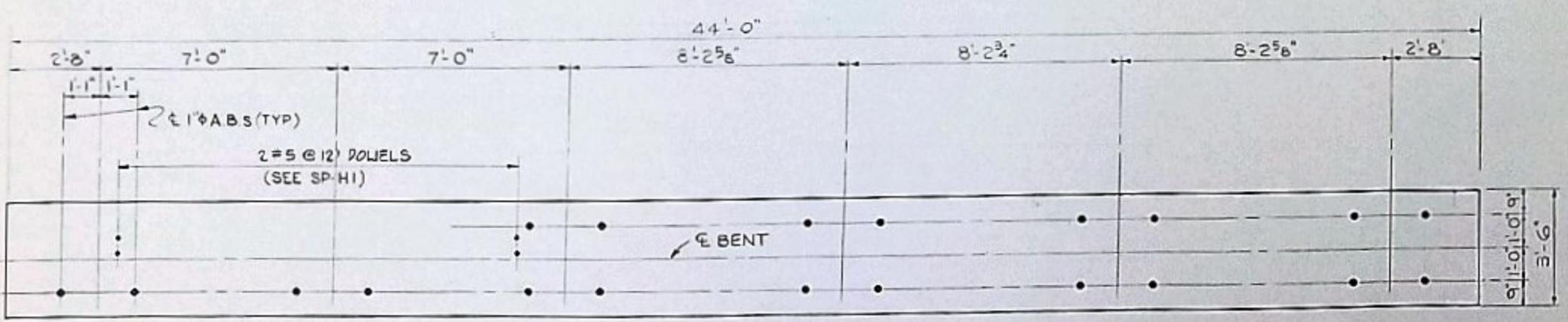
PLAN-BT12A & BT12B



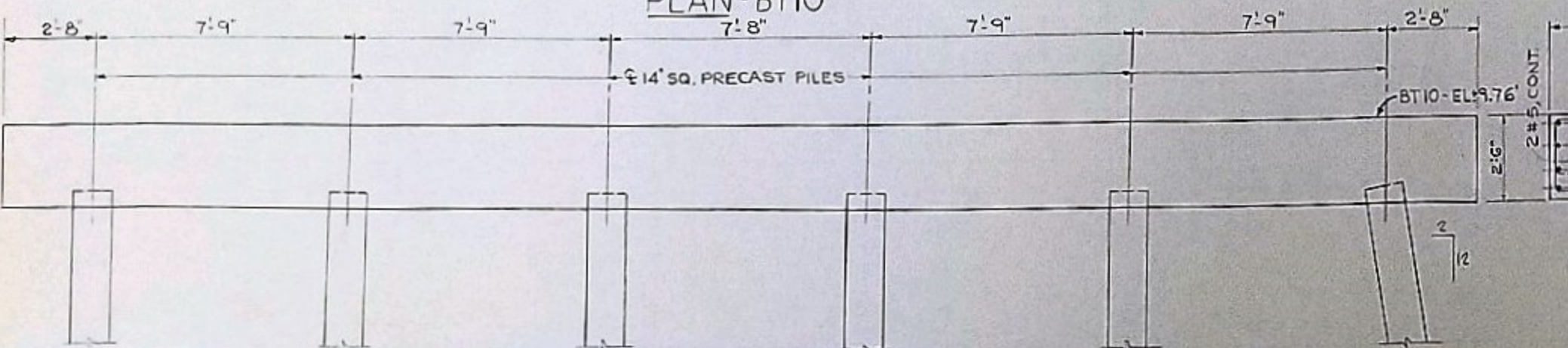
ELEVATION BENTS BT12A & 12B



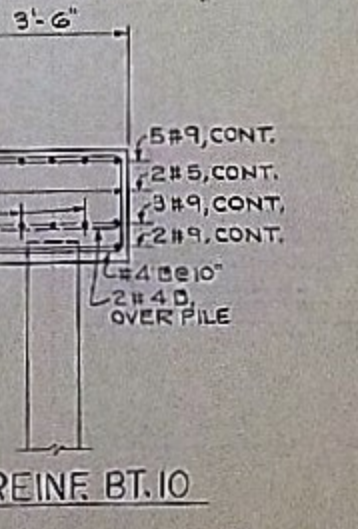
REINF. BT. 12



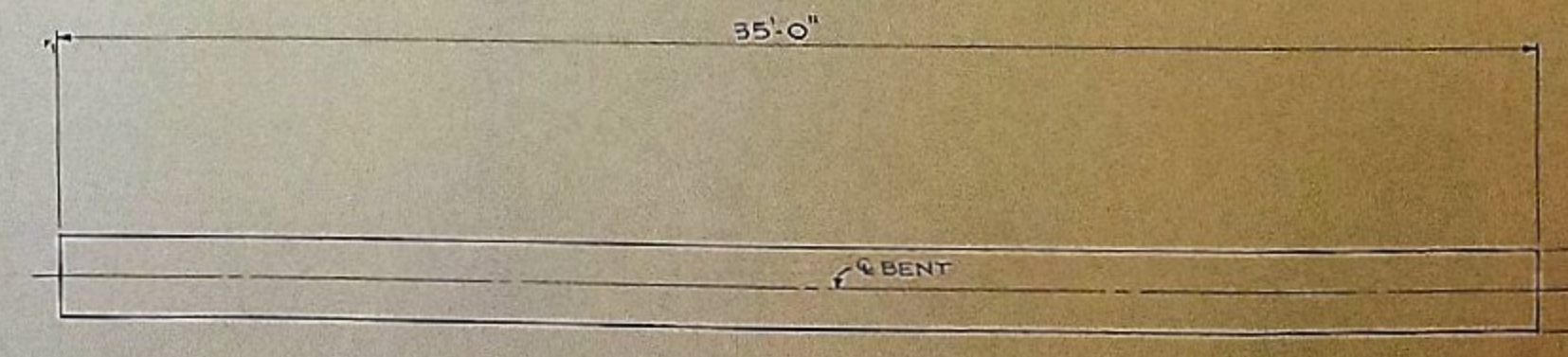
PLAN-BT10



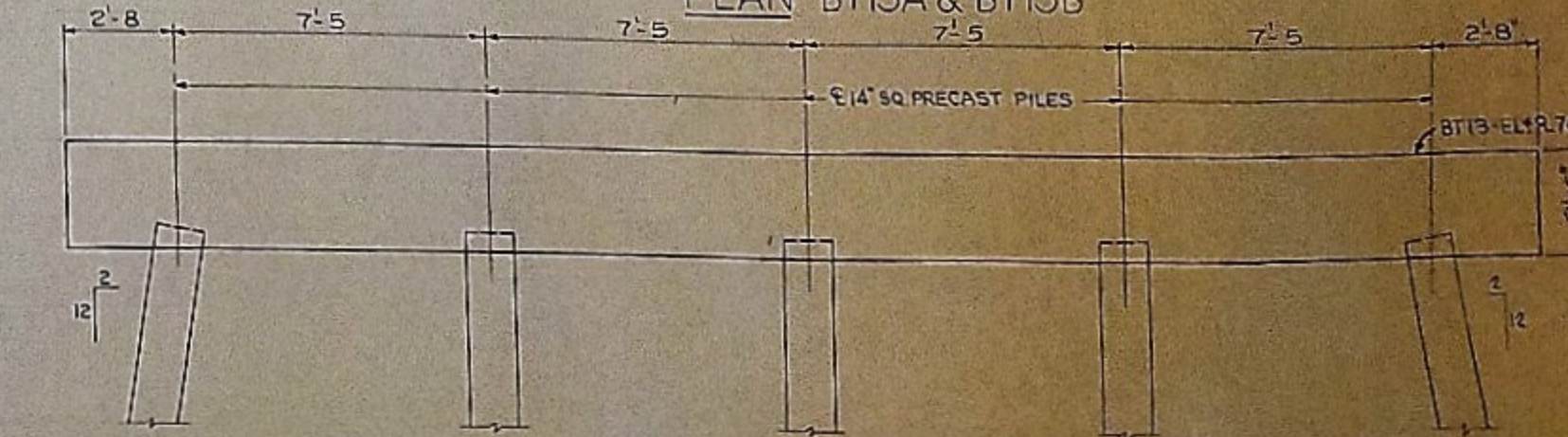
ELEVATION BENT-BT10



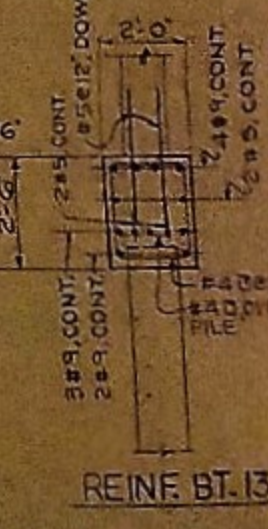
REINF. BT. 10



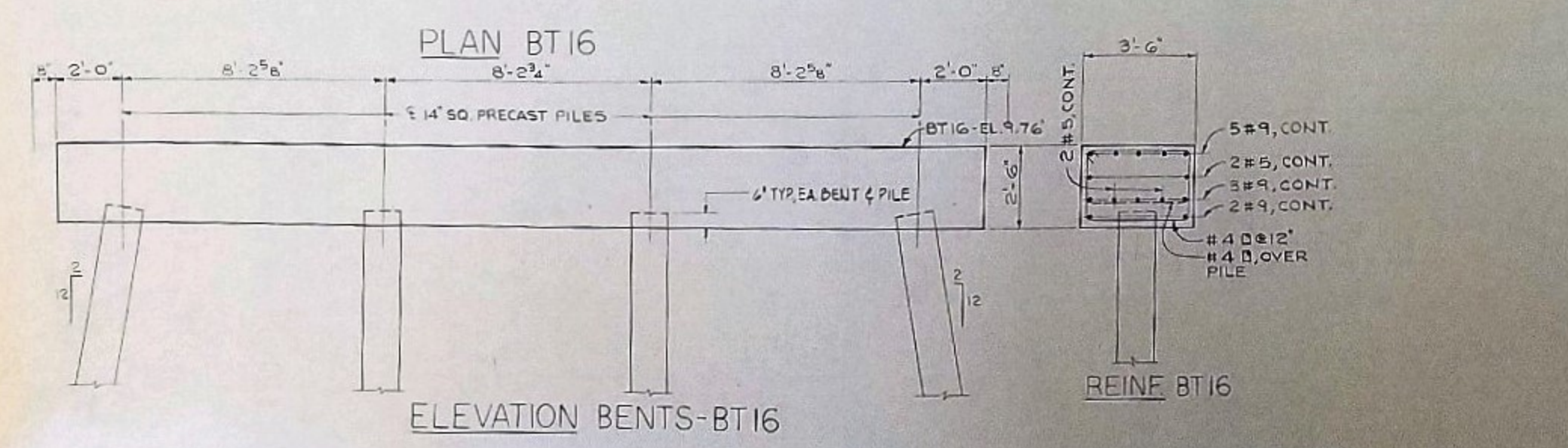
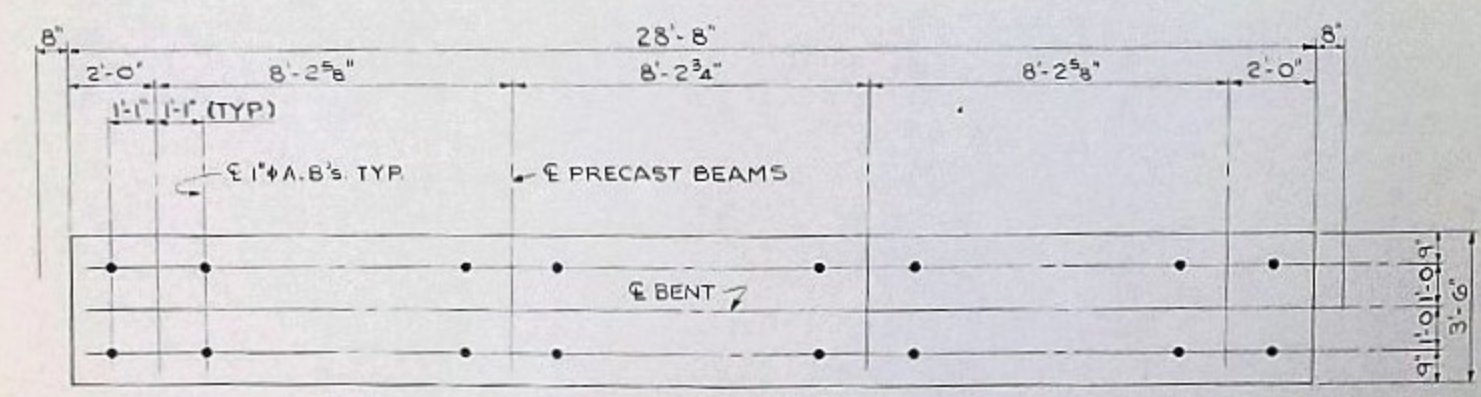
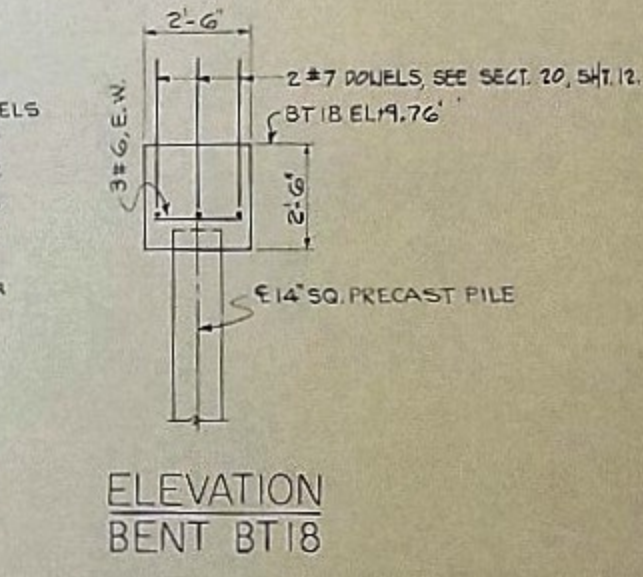
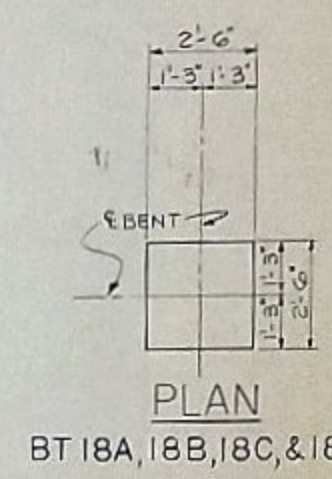
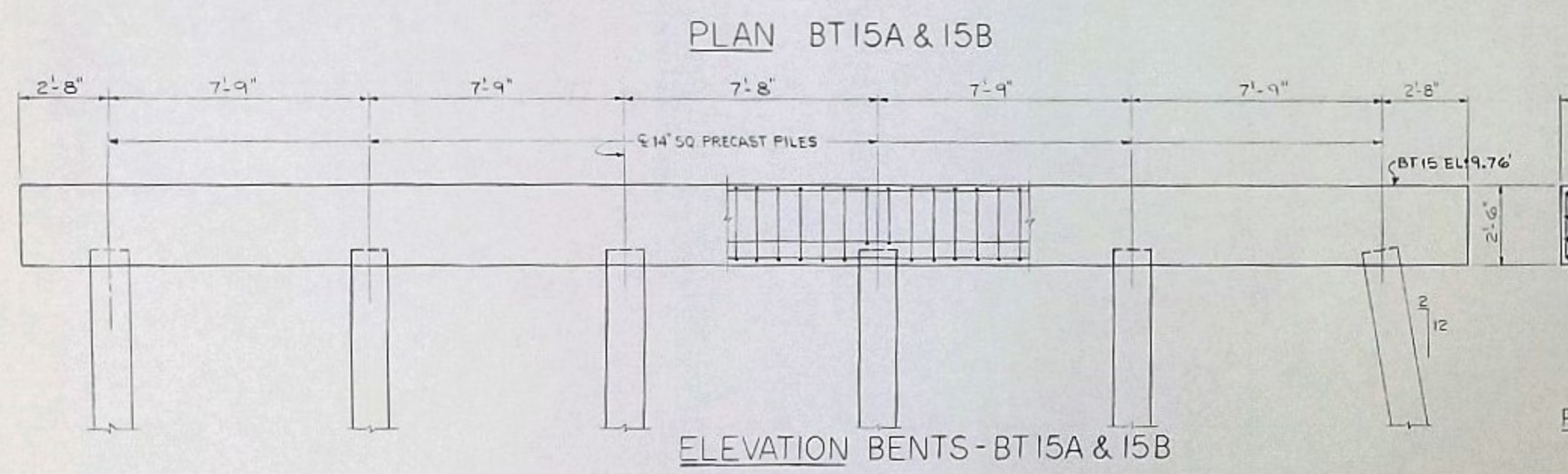
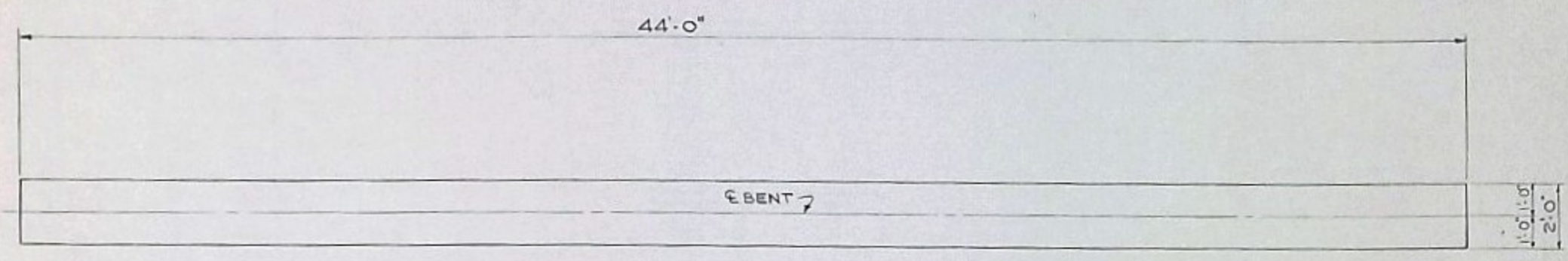
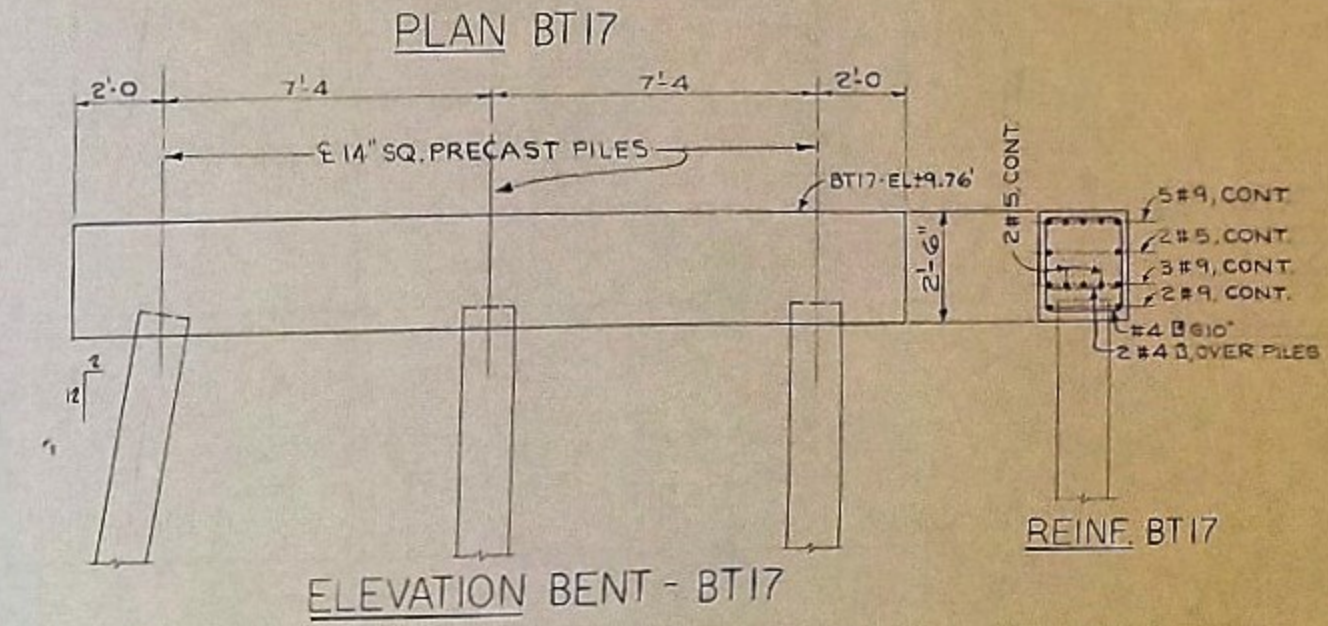
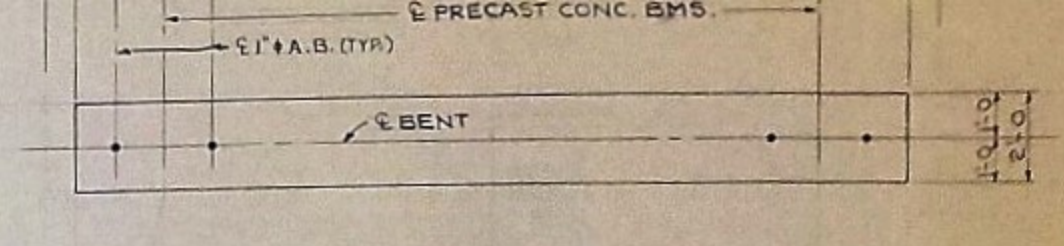
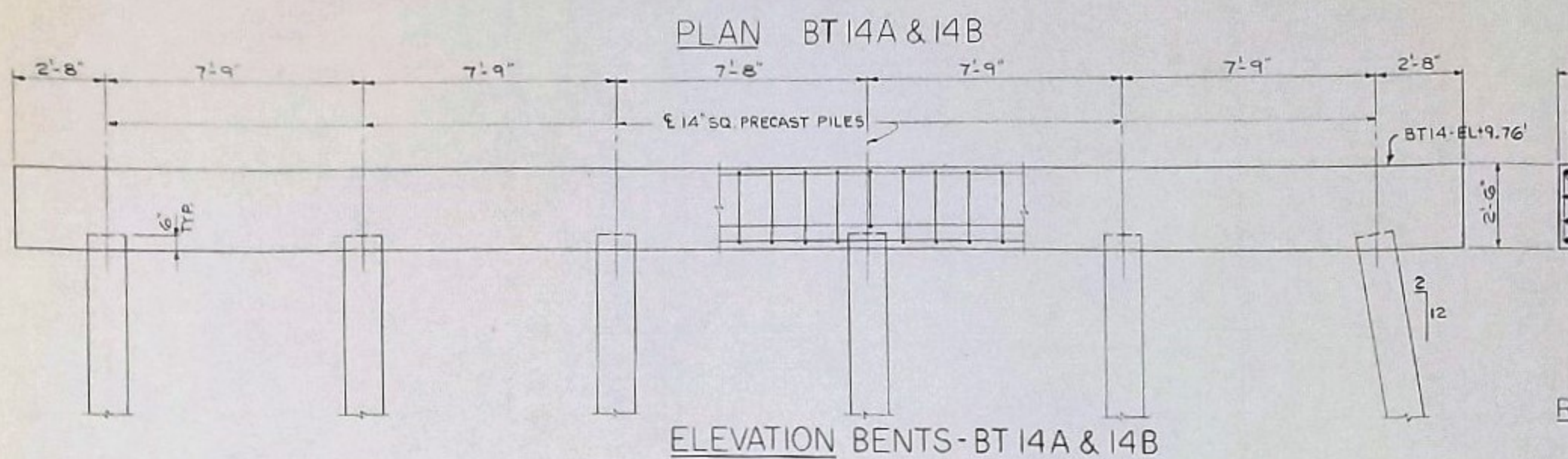
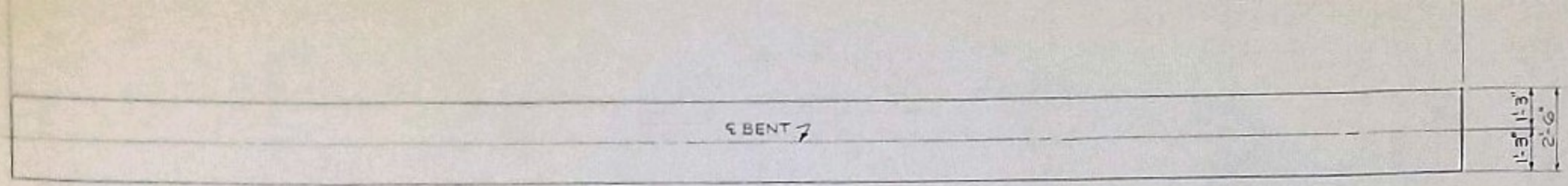
PLAN BT13A & BT13B



ELEVATION BENTS BT13A & 13B



REINF. BT. 13



REVISIONS				APPROVALS			
NO.	DATE	BY	APP.	DATE	BY	APP.	

PROJECT ARCHITECT: J.L. SUDDETH, P.E.
 ARCHITECTURAL DESIGN: H.D. SIMMONS, AIA, EST.
 ENGINEER: H.D. SIMMONS, AIA, EST.
 SPECIFICATIONS: H.D. SIMMONS, AIA, EST.
 DRAWN BY: J.W.J. CHECKED BY: J.L.S. FINAL APPROVAL: J.L.S.

LBC&W SOUTH CAROLINA

GEORGE W. LEE, P.E. ENGINEER

4100 UNIVERSITY BLVD., COLUMBIA, SOUTH CAROLINA 29208 • 803.719.2000

PROJECT: PATRIOT'S POINT CHARLESTON, SOUTH CAROLINA

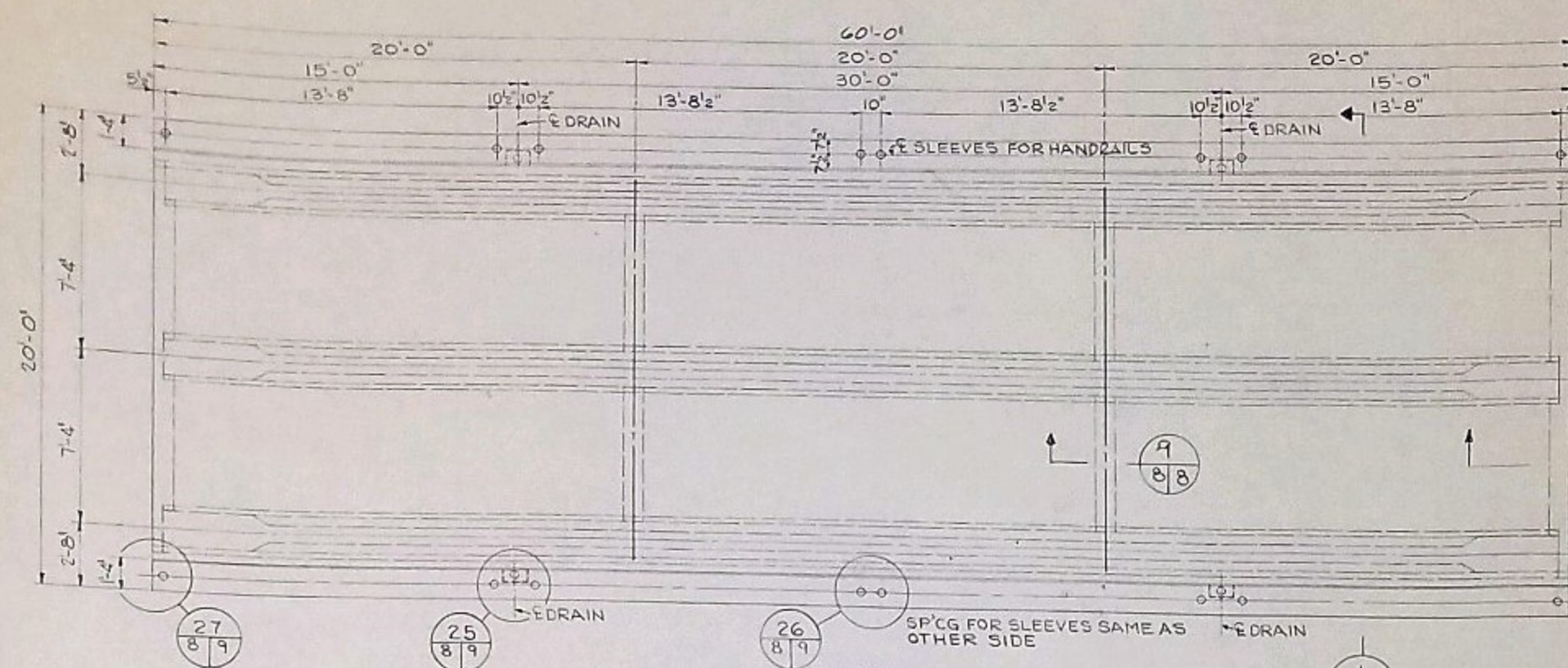
DATE: 28 FEB. 1975

DRAWING NUMBER: P-153-6

SHEET TITLE: PLANS & DETAILS BENTS BT-14 THRU BT-18

DIVISION: STRUCTURAL

SHEET: 6

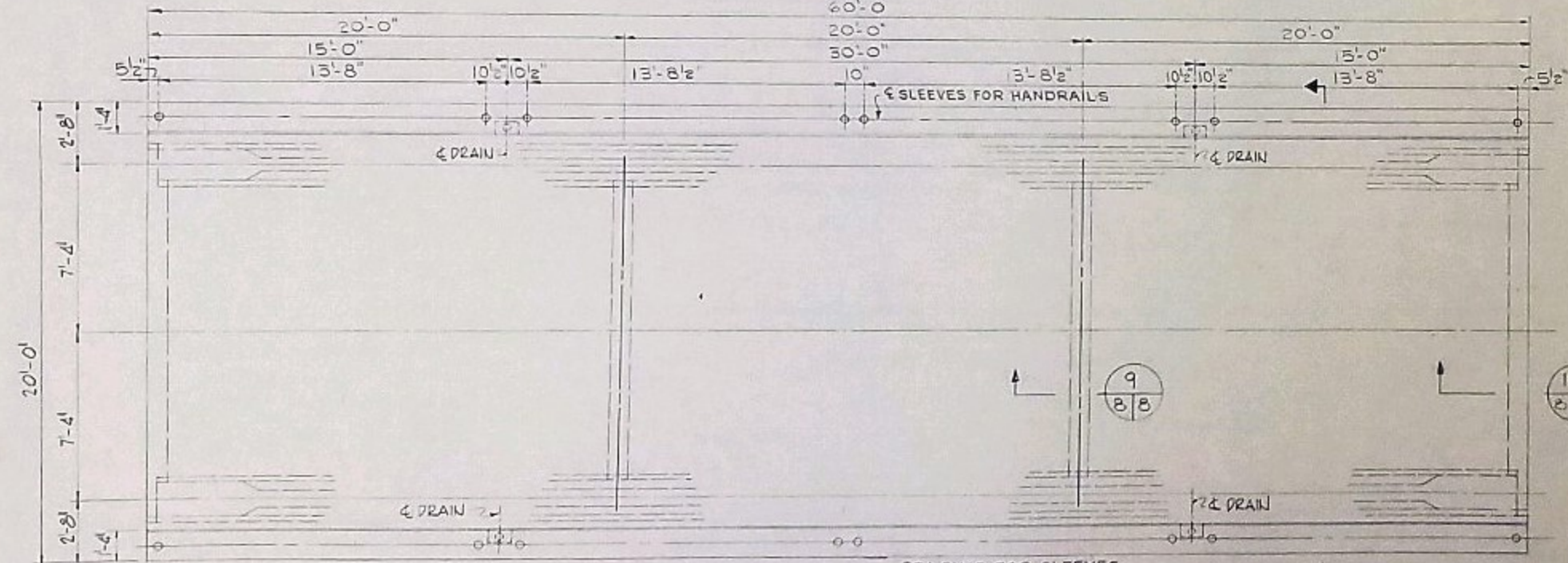


PLAN
SPANS SP-B1 THRU SP-B11
SCALE 1/4"=1'-0"

NOTE: SPANS SP-B1-B4 DO NOT REQUIRE HANDRAILS DRAINS OR CURB THIS SIDE.

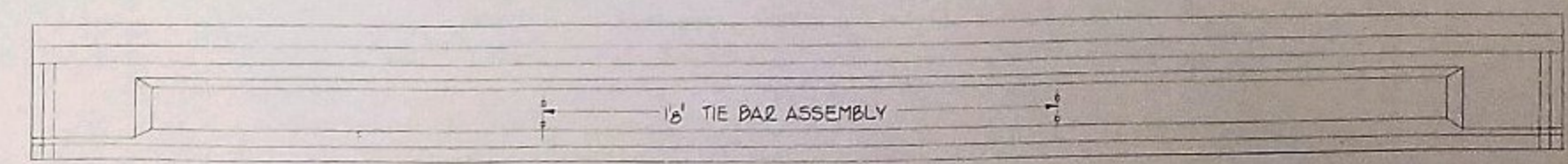


ELEVATION
SCALE 1/4"=1'-0"

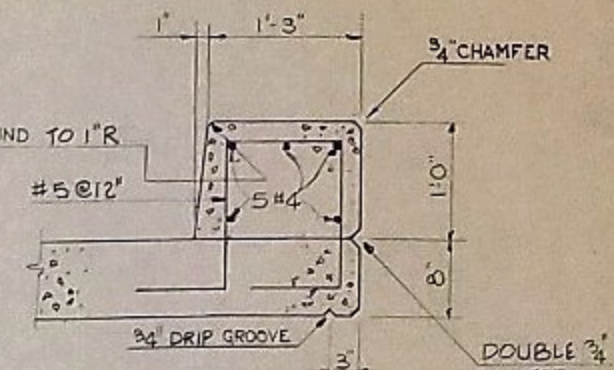


PLAN
SPANS SP-C1 THRU SP-C7
SCALE 1/4"=1'-0"

SPACING FOR SLEEVES SAME AS OTHER SIDE

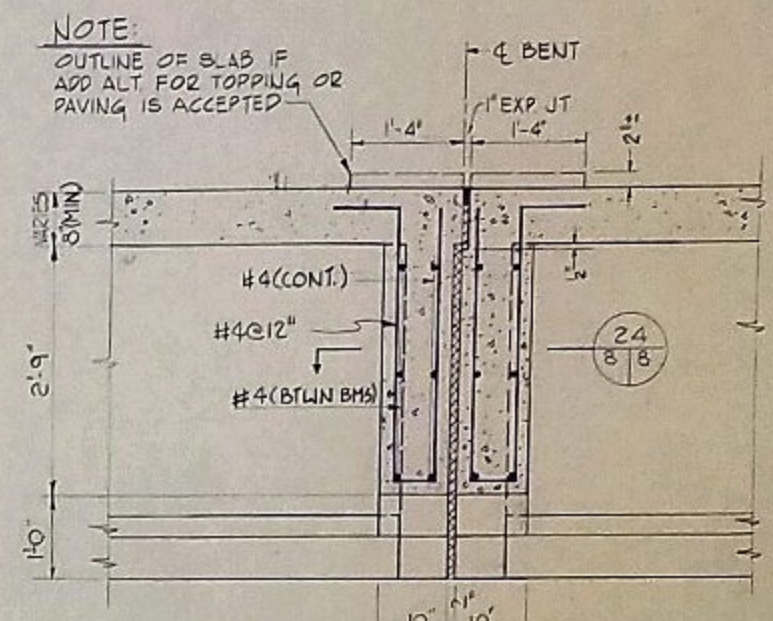


ELEVATION
SCALE 1/4"=1'-0"



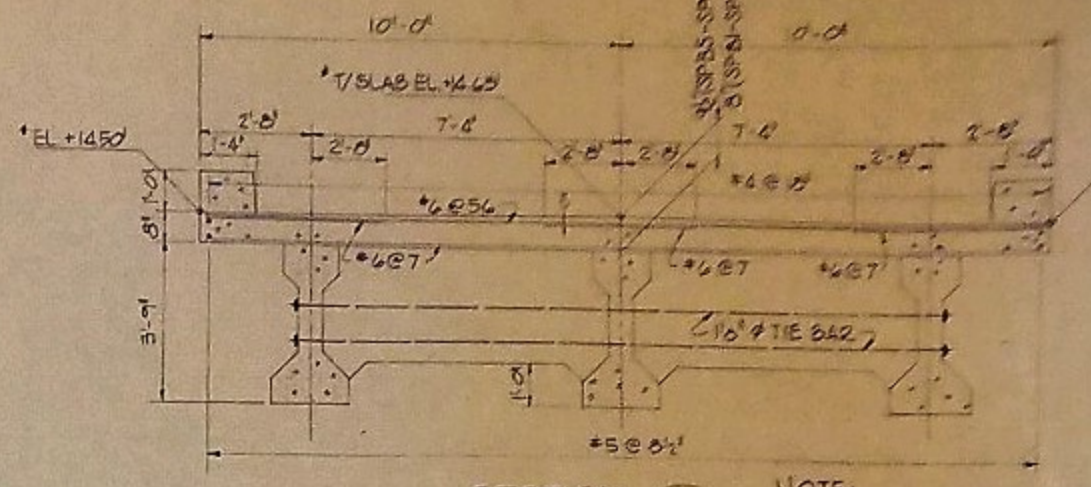
TYPICAL CURB DETAIL
SCALE 1"=1'-0"

NOTE: SPANS SP-B1-B4 ROUND TO 1" R DO NOT REQUIRE HANDRAILS DRAINS OR CURB THIS SIDE.



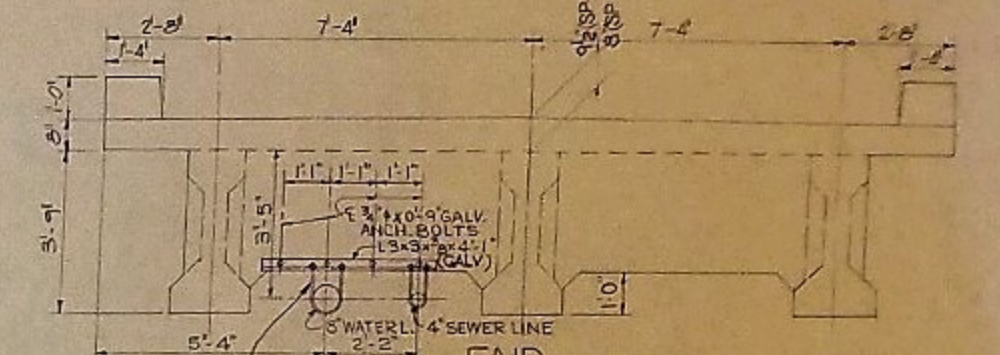
SECTION
SCALE 3/4"=1'-0"

NOTE: OUTLINE OF SLAB IF ADD ALT FOR TOPPING OR PAVING IS ACCEPTED.



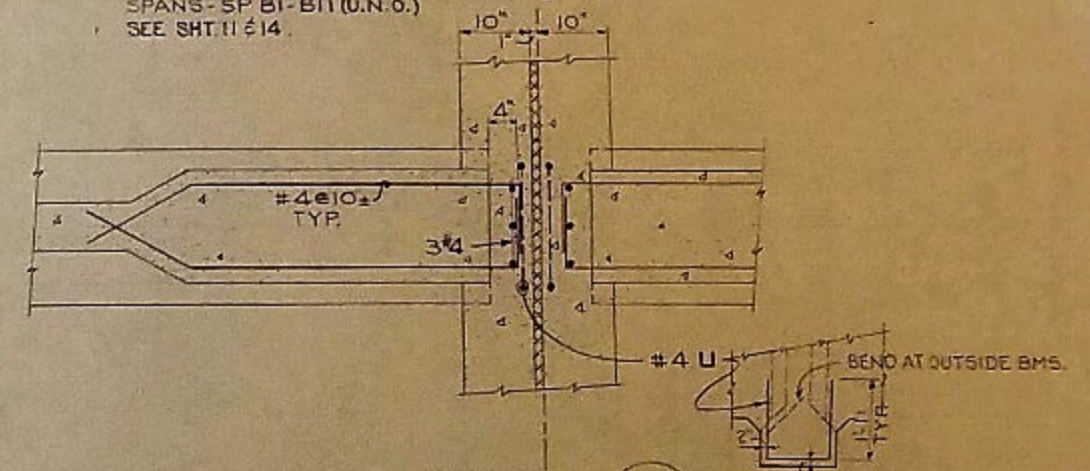
SECTION
SCALE 3/4"=1'-0"

NOTE: 1/8" TIE BAR W/ HEX NUT & 4x4x4 THICK W/ WASHER BA END THREADED ENDS & PEEN OR TACK WELDED NUTS TO BAR AFTER TIGHTENING TO PREVENT TURNING.



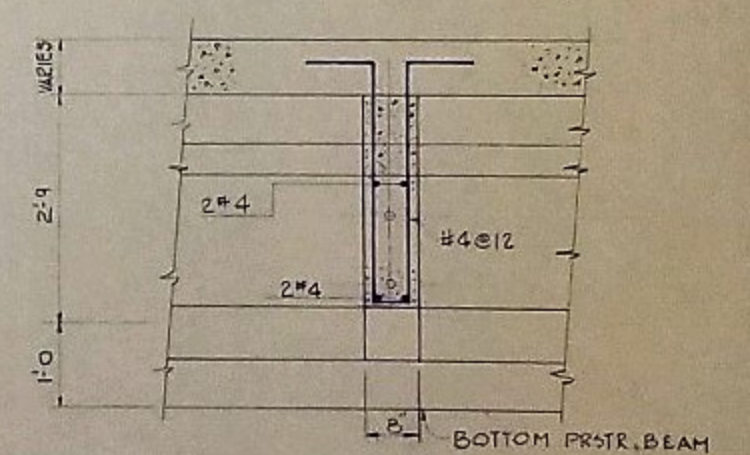
END ELEVATION
SCALE 3/4"=1'-0"

NOTE: ANGLE PIPE SUPPORT TYP ALL DIAPH (20' OC) SPANS SP-B1-B11 (U.N.O.) SEE SHT 11 & 14.



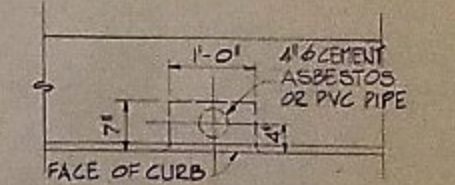
SECTION
SCALE 3/4"=1'-0"

TYP @ END OF BMS (U.N.O.)

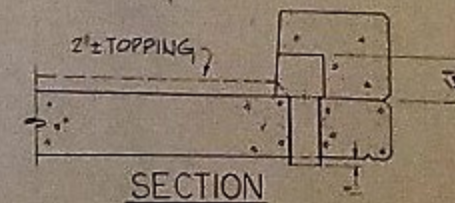


SECTION
SCALE 3/4"=1'-0"

BOTTOM PRE-TEN. BEAM

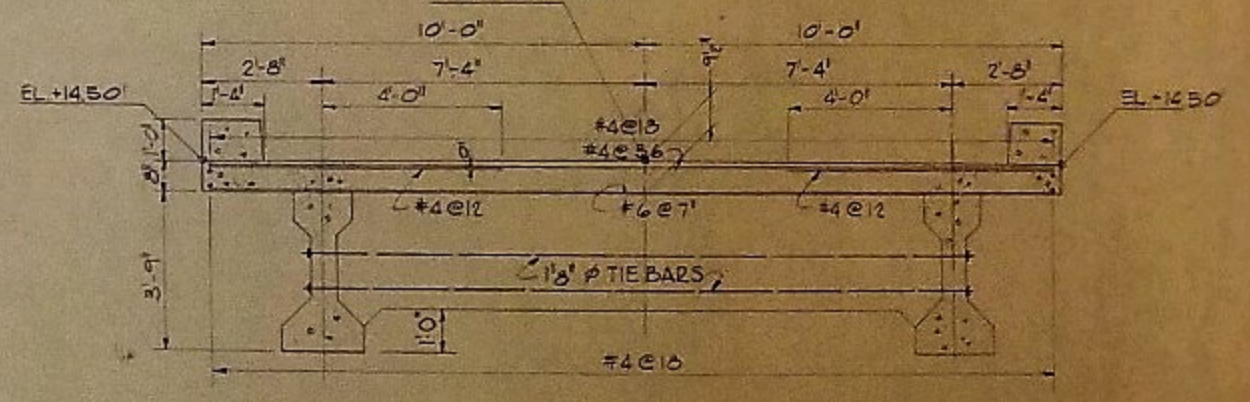


PLAN



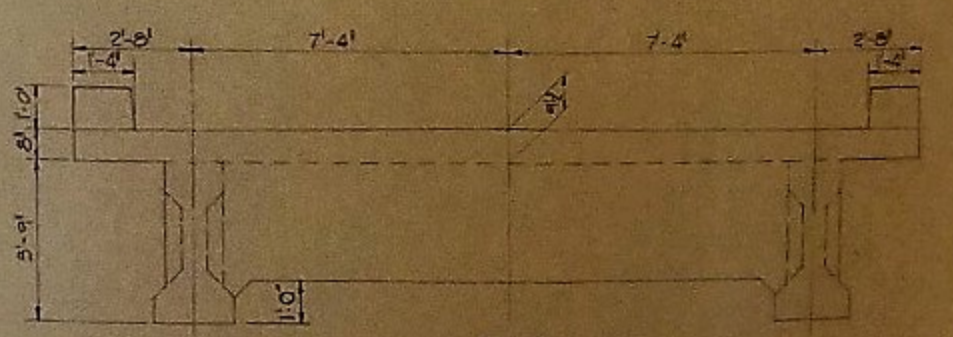
SECTION

TYP DRAIN DETAIL
SCALE 3/4"=1'-0"



SECTION
SCALE 3/4"=1'-0"

SECTION 2
SCALE 3/4"=1'-0"



END ELEVATION
SCALE 3/4"=1'-0"

DRAWINGS
Drawing No. P-153-8, Section 10/7, 8, 9, 10, 11, 12/8
Note shown at top of this section shall read: "Outline of slab if Add Alc for pavers is accepted."
Dimension shown as 2" shall be changed to 2-3/4".
Typical Drain Detail - Change reference "2" topping" to "2-3/4" Pavers".

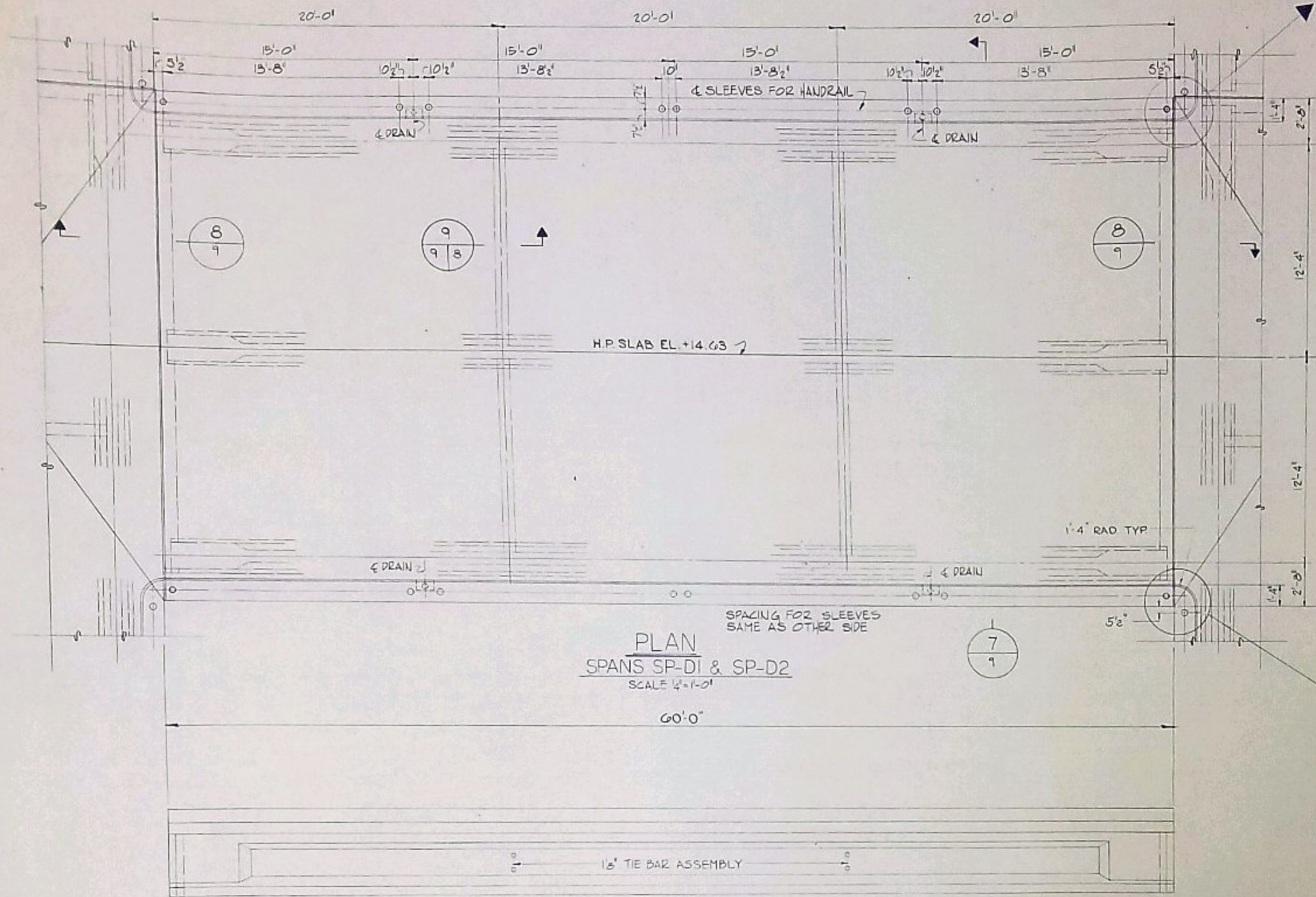
DRAWING NUMBER P-153-8

REVISION	DESCRIPTION	BY	APP	LOCATION	DATE	BY	APP	APPROVALS	PROJECT ARCHITECT
								J.L. SUDDETH, P.E.	ARCHITECTURAL DESIGN
								H.D. SIMMONS, AIA, CST	ENGINEER
								RH/PA	CHECKED BY JLS
									FINAL APPROVAL

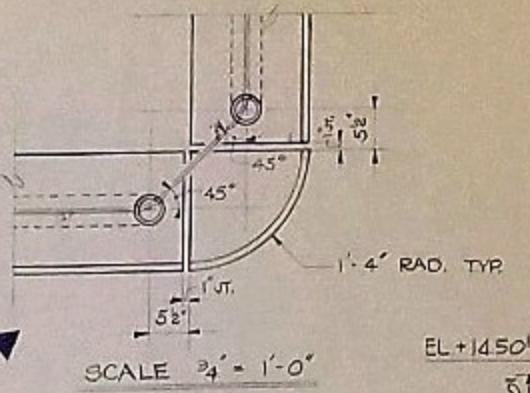
LBC&W SOUTH CAROLINA
 GERRAIS AT SUMNER • COLUMBIA, SOUTH CAROLINA 29202 • 803-779-0200
 A MEMBER OF LBC&W GROUP

PATRIOT'S POINT
 CHARLESTON, SOUTH CAROLINA
 DATE 28 FEB 1975

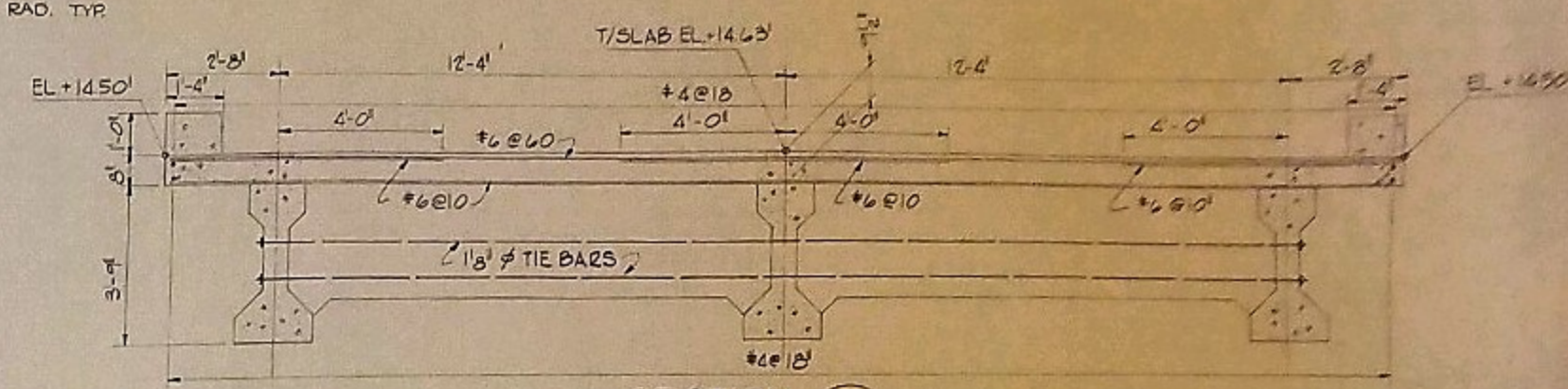
PLANS & DETAILS
 SPANS SP-B1 THRU SP-C7
 SHEET TITLE
 DIVISION STRUCTURAL
8



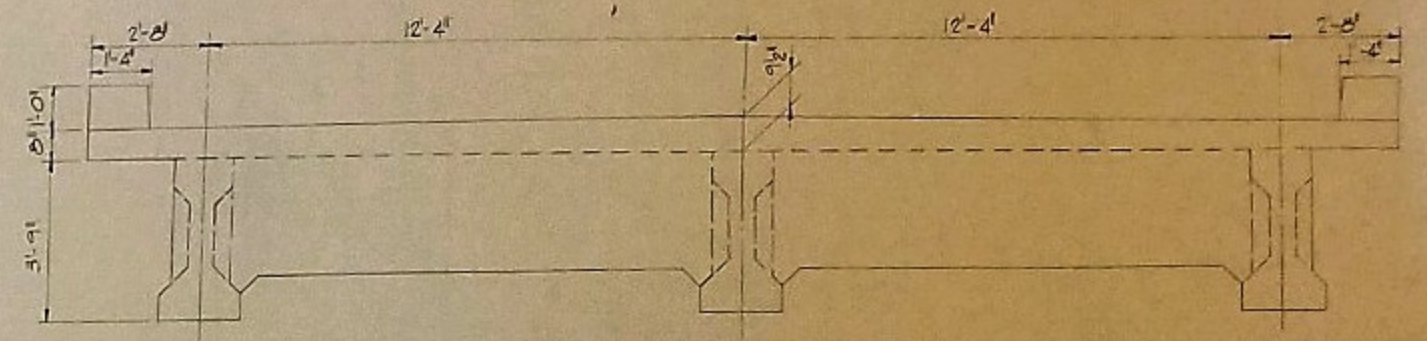
PLAN
SPANS SP-D1 & SP-D2
SCALE 1/4" = 1'-0"



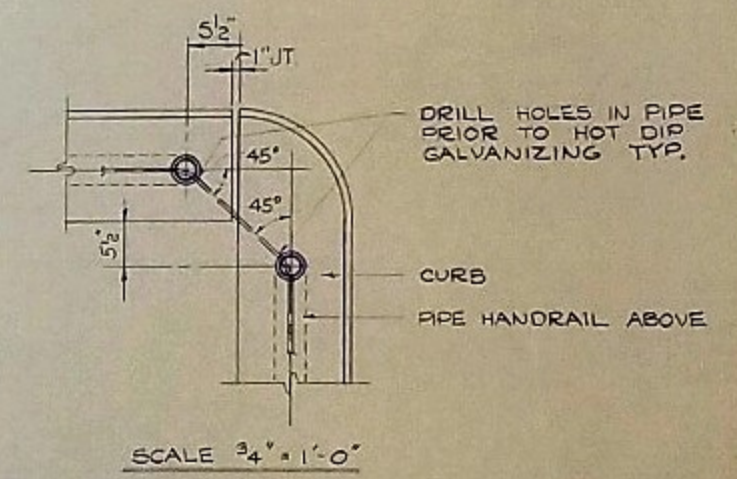
SCALE 3/4" = 1'-0"



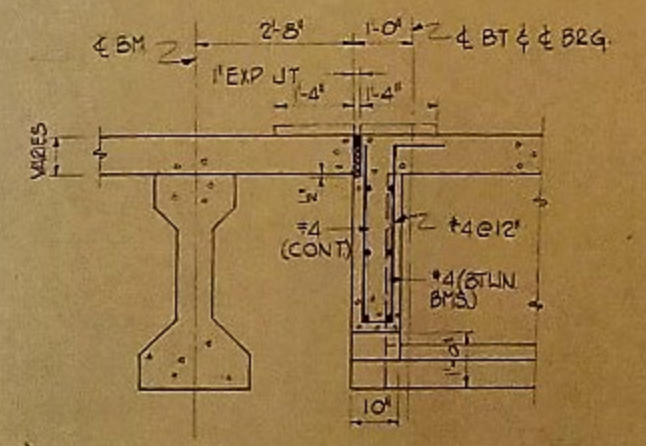
SECTION 7
SCALE 3/8" = 1'-0"



END ELEVATION
SCALE 3/8" = 1'-0"

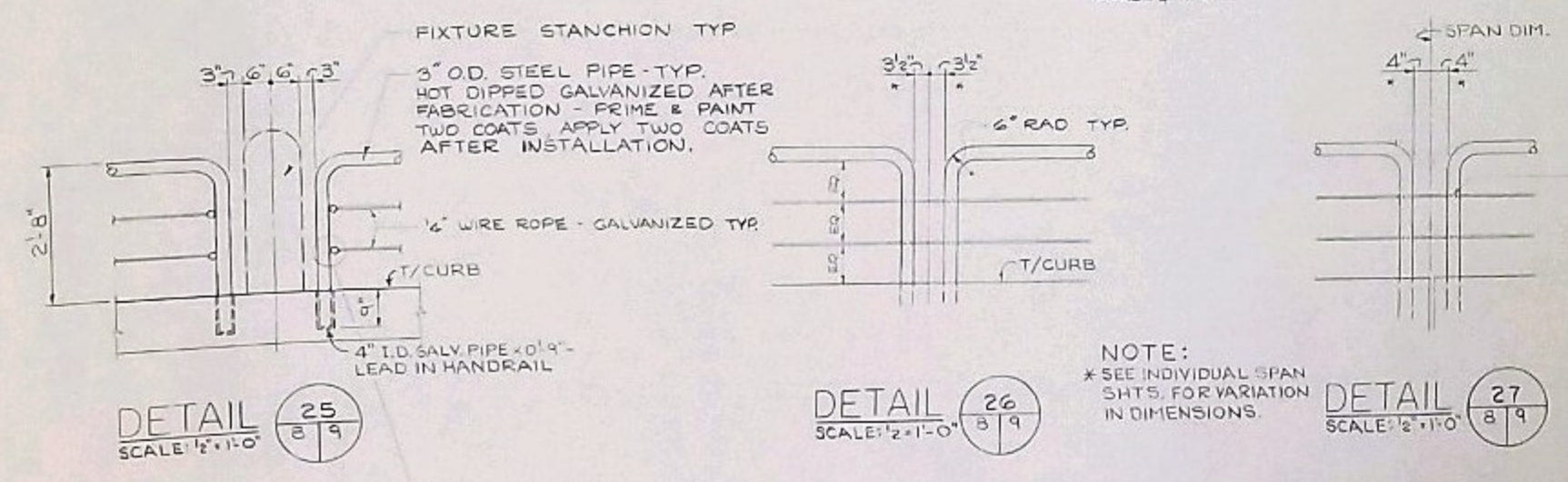


SCALE 3/4" = 1'-0"

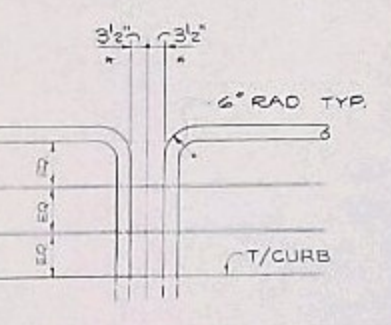


SECTION 8
SCALE 1/2" = 1'-0"

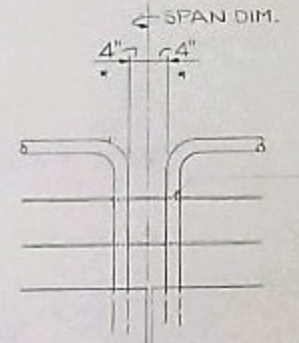
ELEVATION
SCALE 1/4" = 1'-0"



DETAIL 25
SCALE 1/2" = 1'-0"



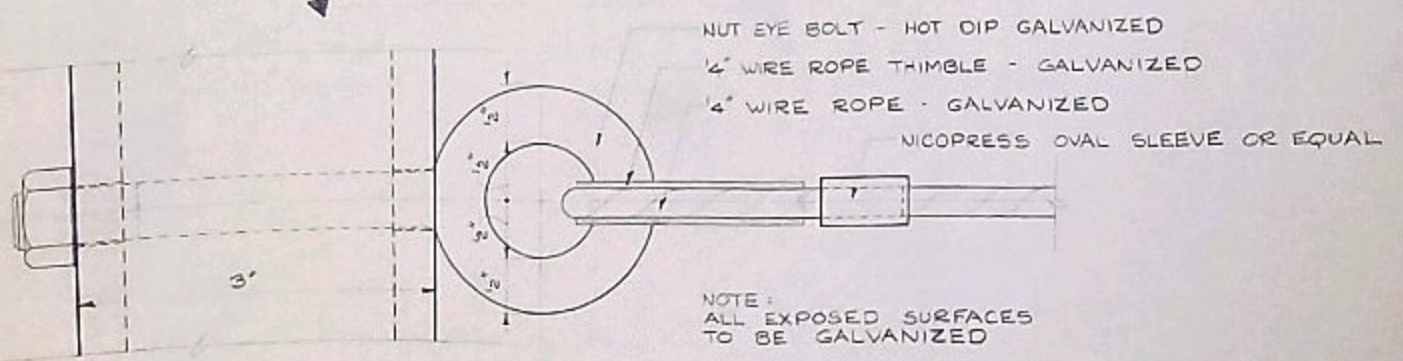
DETAIL 26
SCALE 1/2" = 1'-0"



DETAIL 27
SCALE 1/2" = 1'-0"

DRILL 3/8\"/>

NOTE:
*SEE INDIVIDUAL SPAN
SHEETS FOR VARIATION
IN DIMENSIONS.



DETAIL - FASTENING HARDWARE
SCALE 1" = 1'-0"

REVISIONS	DESCRIPTION	BY	APP	DATE	BY	APP

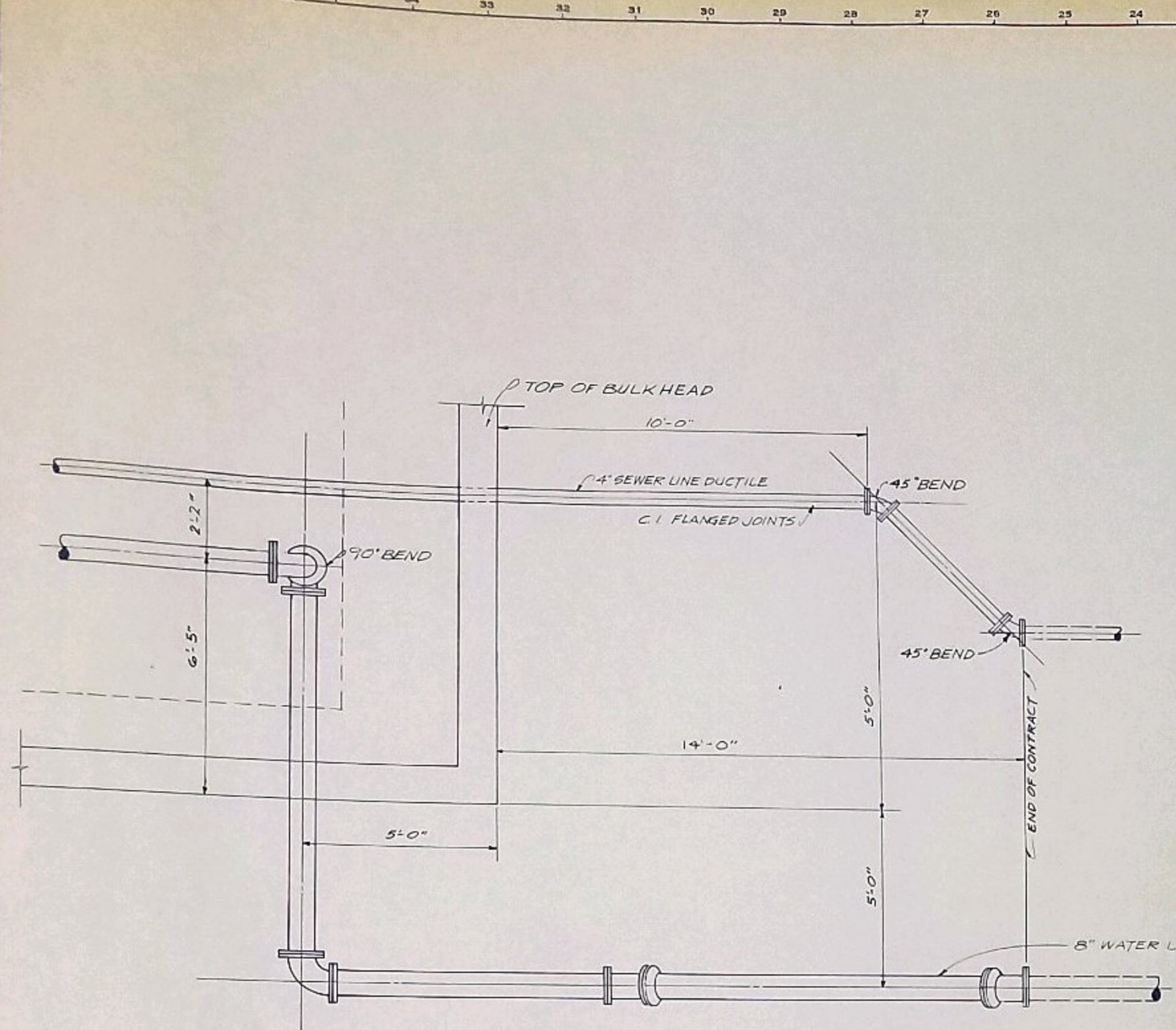
APPROVALS	PROJECT ARCHITECT	ARCHITECTURAL DESIGN
J.L. SLIDDETH, P.E.		
H.D. SIMMONS, AIA		

LBC&W SOUTH CAROLINA
 1405 W. 11th St. Columbia, SC 29202
 803-733-1111

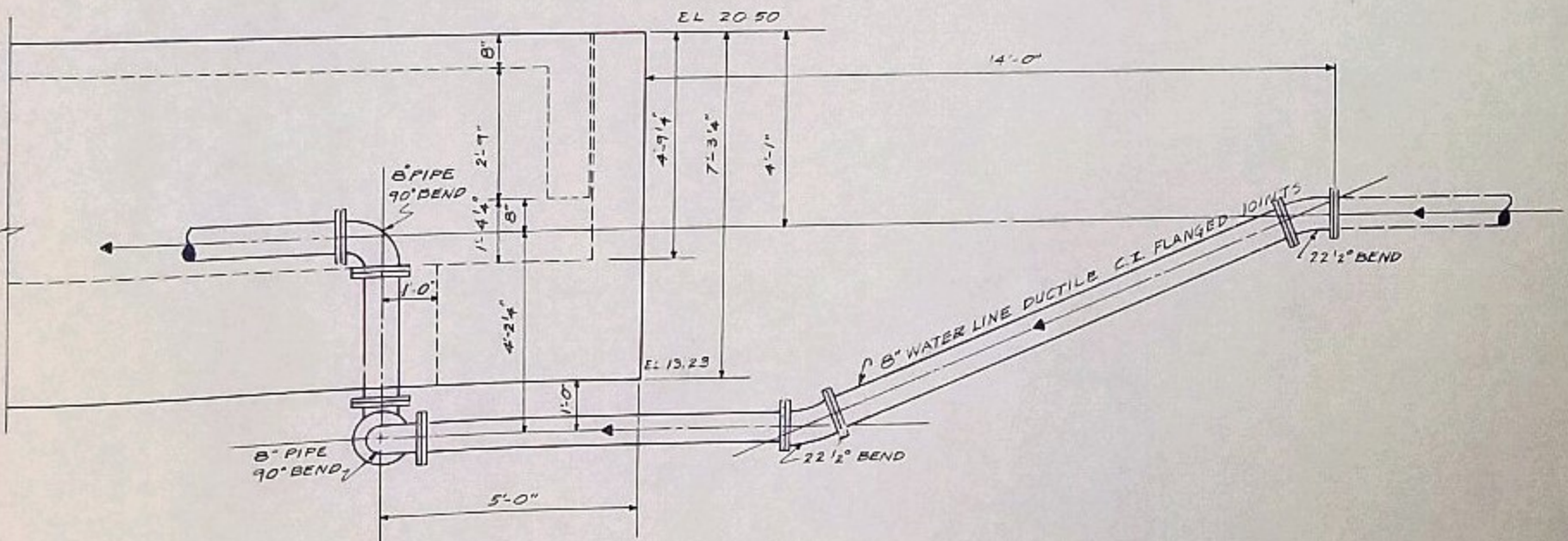
PATRIOT'S POINT
 CHARLESTON, SOUTH CAROLINA

PLANS & DETAILS
 SPANS SP-D1 & SP-D2

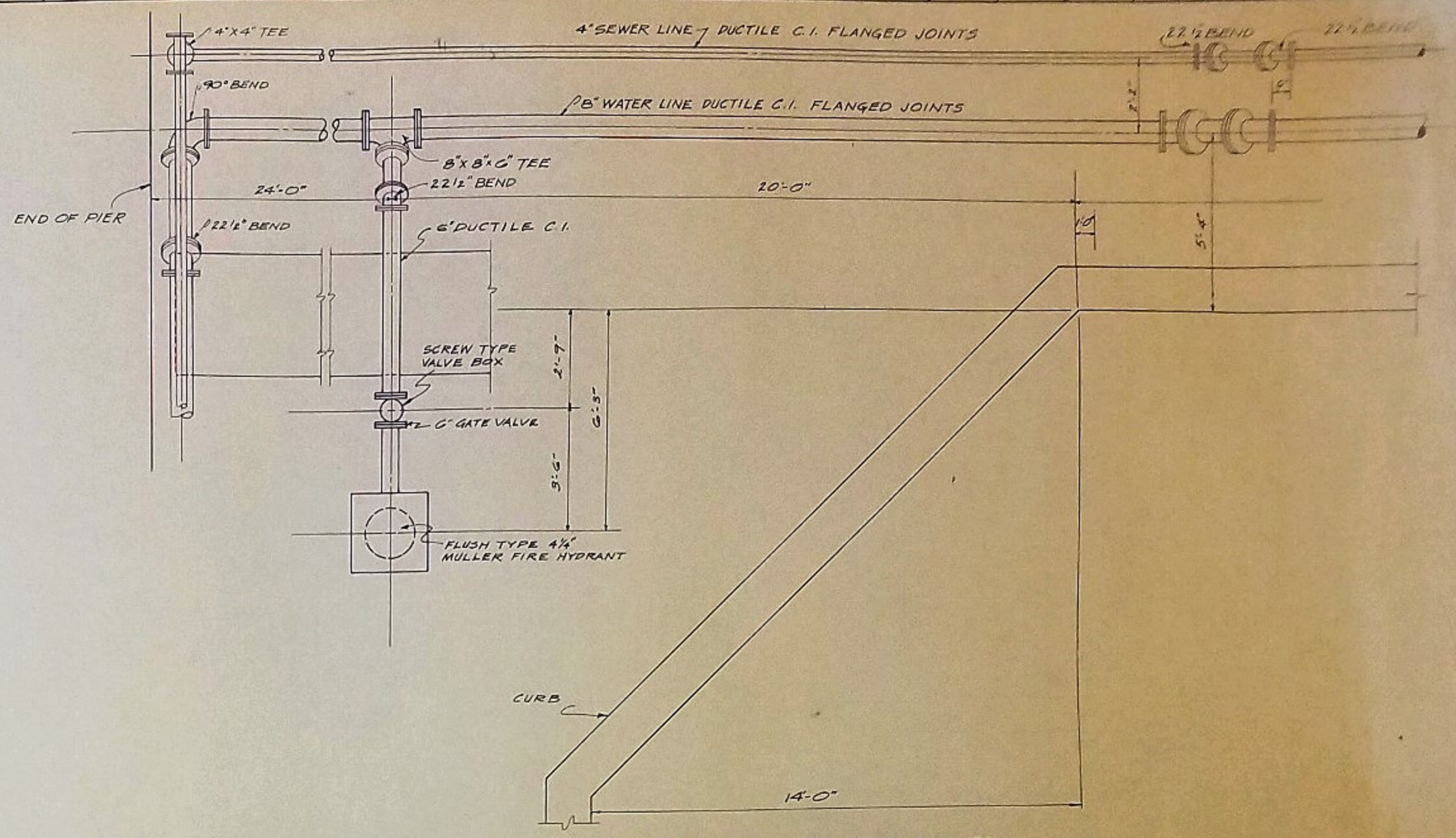
DRAWING NUMBER: P-153-9
 SHEET: 9



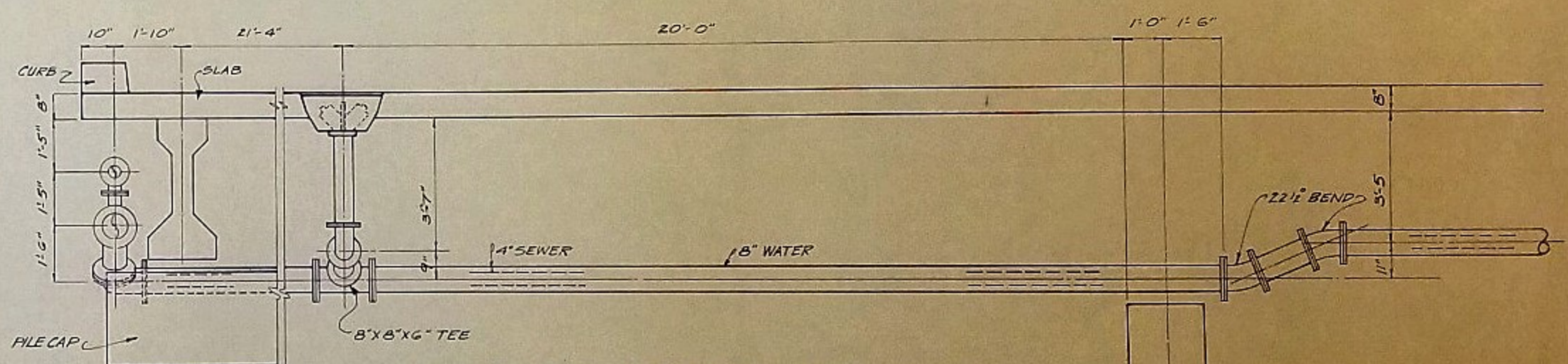
TOP VIEW OF PIPE DETAIL AT LOCATION "A"
SCALE: 1/2" = 1'-0"



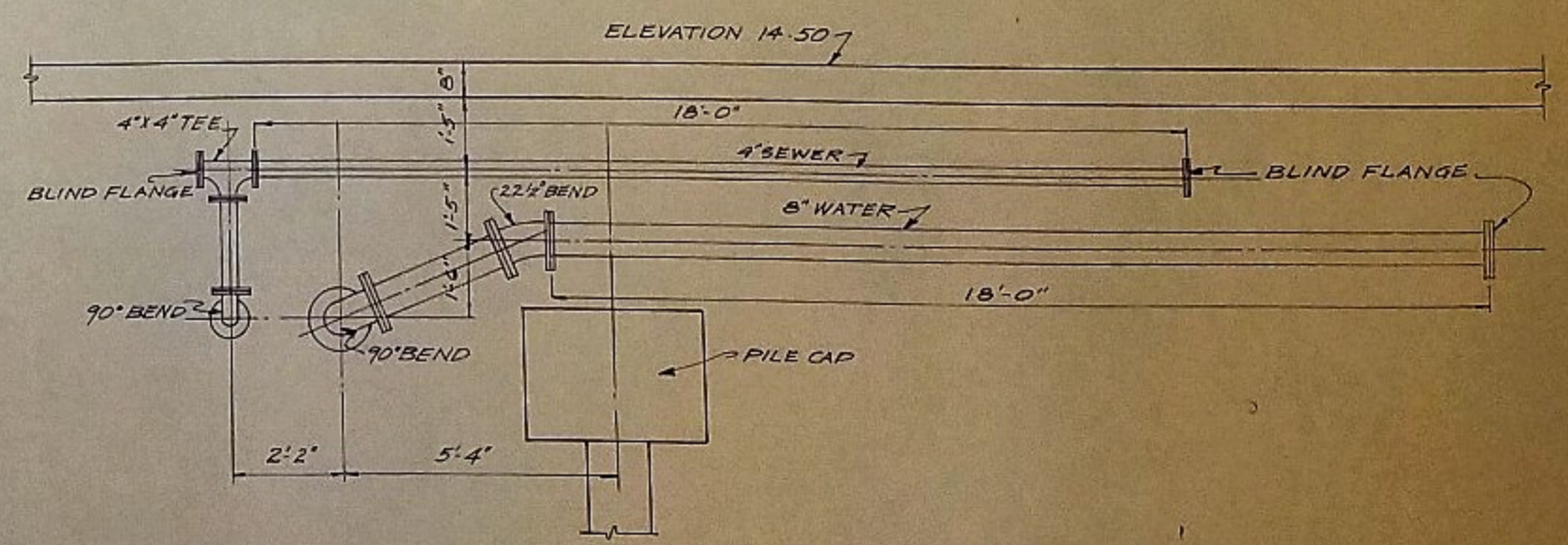
SIDE VIEW OF PIPE DETAIL AT LOCATION "A"
SCALE: 1/2" = 1'-0"



TOP VIEW OF PIPE DETAIL AT LOCATION "B"
SCALE: 1/2" = 1'-0"



SIDE VIEW OF PIPE DETAIL AT LOCATION "B"
SCALE: 1/2" = 1'-0"



END VIEW OF PIPE DETAIL AT LOCATION "B"
SCALE: 1/2" = 1'-0"

PATERIOR POINT
PIER

REVISIONS				APPROVALS			
DATE	BY	LOCATION	DESCRIPTION	DATE	BY	APP.	

PROJECT ARCHITECT	W.R. KARASIEWICZ
ARCHITECTURAL DESIGN	H.D. SIMMONS, AIA, C.S.I.
ENGINEER	
SPECIFICATIONS	
DRAWN BY	J.E.H.
CHECKED BY	

LBC&W SOUTH CAROLINA

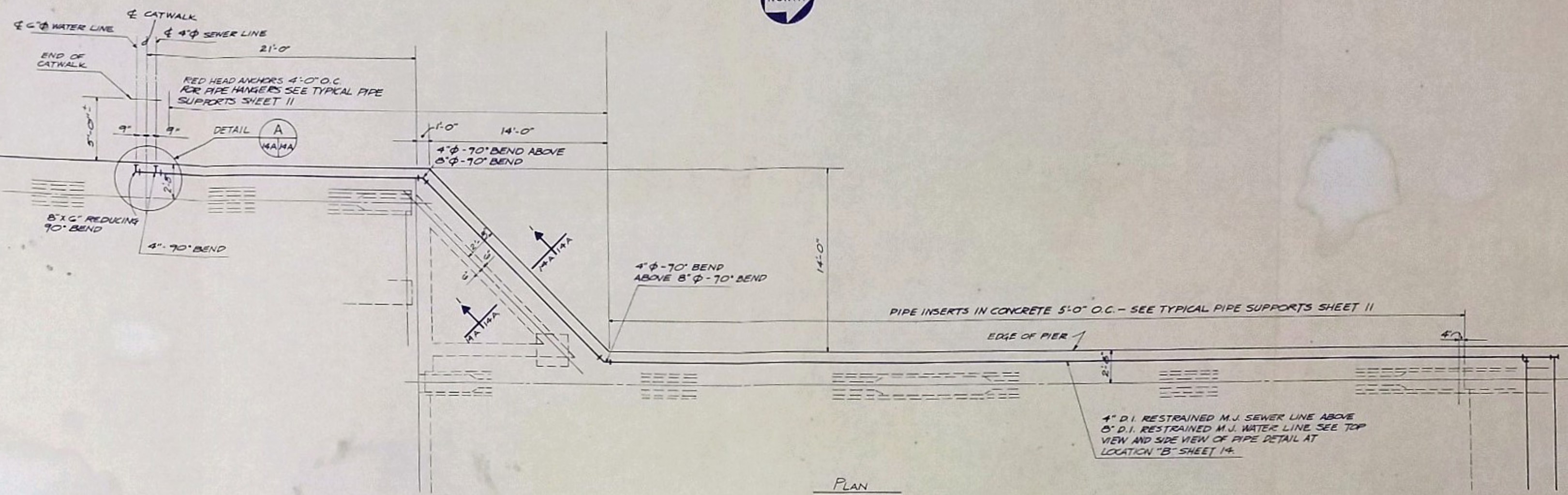
GERVAIS AT BUNTER • COLUMBIA, SOUTH CAROLINA 29222 • 803-779-3882

This drawing and the design shown thereon are the property of LBC&W, INCORPORATED. The reproduction, copying, or use of this drawing without their written consent is prohibited and any infringement will be subject to legal action.

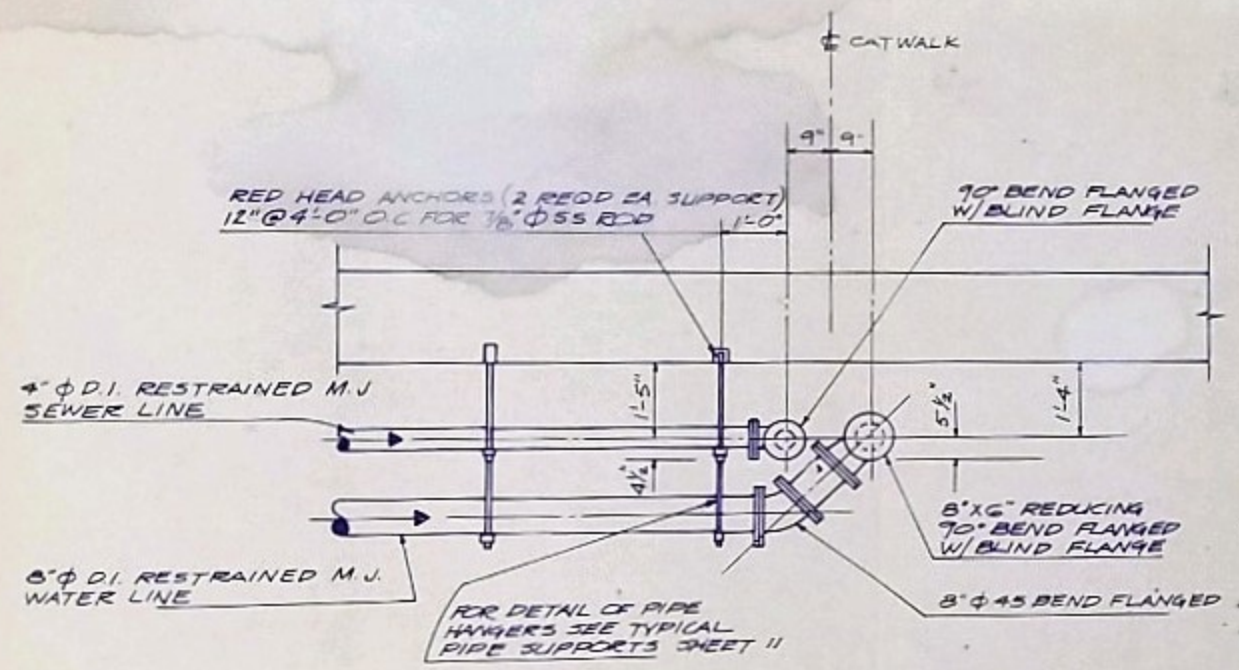
PROJECT: **PATRIOT'S POINT**
CHARLESTON, SOUTH CAROLINA

DATE: 28 FEB 1975 FILE NO: P-153 DIVISION: STRUCTURAL

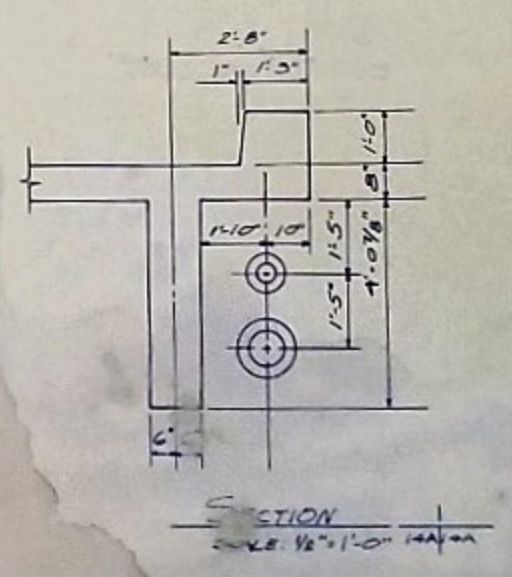
SHEET TITLE: **PIPING DETAILS**



PLAN
 SCALE 1/4" = 1'-0"



DETAIL A
 SCALE: 1/2" = 1'-0"



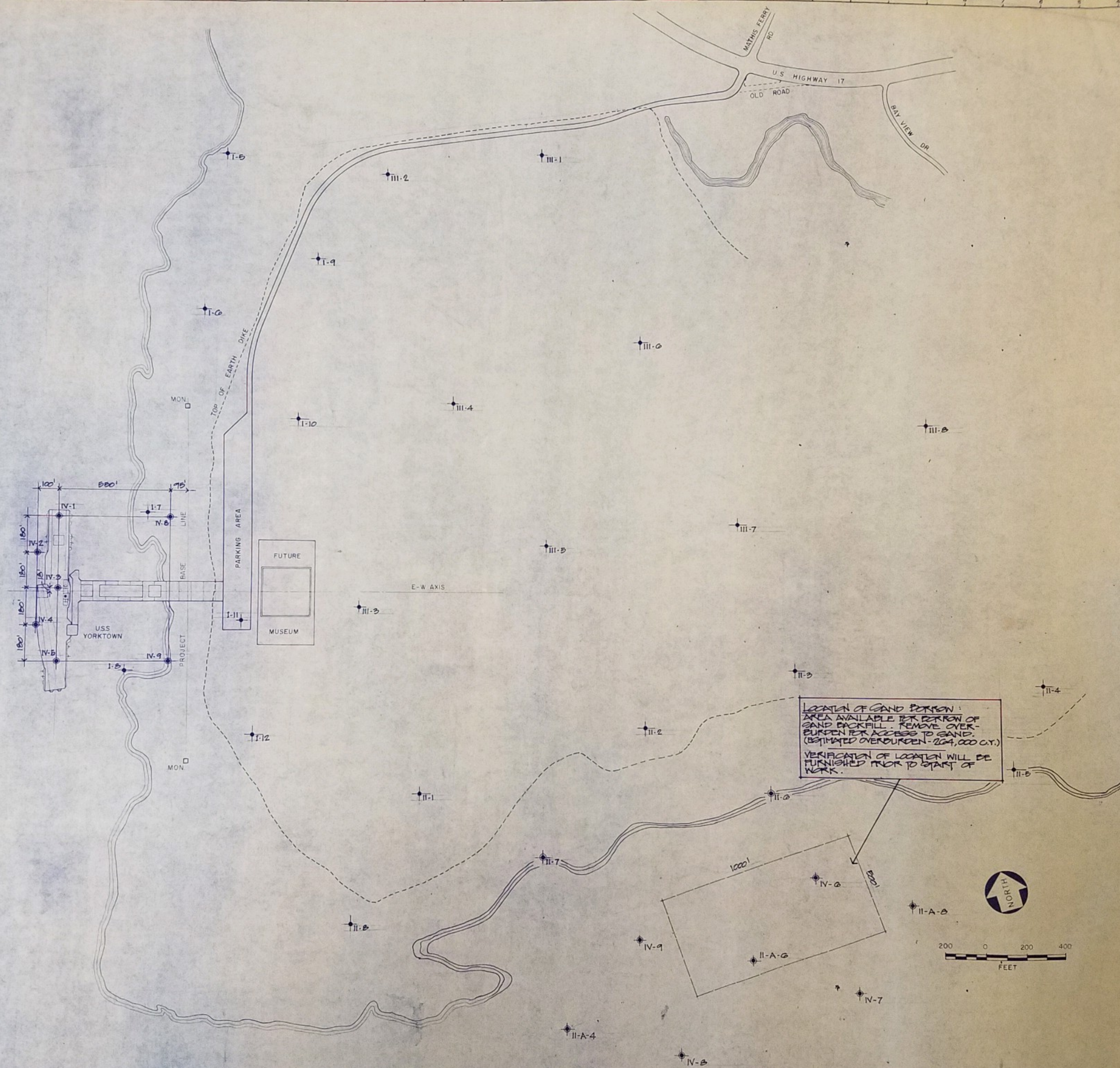
REVISIONS		DATE		BY		APP		LOCATION		DESCRIPTION		DATE		BY		APP		APPROVALS	

LBC&W SOUTH CAROLINA
 ENGINEERS ARCHITECTS
 2000 W. BROADWAY
 CHARLESTON, SOUTH CAROLINA 29403
 803-773-2000

PATRIOT'S POINT
 CHARLESTON, SOUTH CAROLINA
 DATE: NOV. 1975

DRAWING NUMBER: P-153-14A
 SHEET TITLE: PIER PIPING
 SHEET: 14A

COOPER RIVER



LOCATION OF SAND BORING:
 AREA AVAILABLE FOR BORROW OF
 SAND BACKFILL. REMOVE OVER-
 BURDEN FOR ACCESS TO SAND.
 (ESTIMATED OVERBURDEN - 204,000 C.Y.)
 VERIFICATION OF LOCATION WILL BE
 FURNISHED PRIOR TO START OF
 WORK.

REVISIONS	DESCRIPTION	DATE	BY	APP.	LOCATION	REVISIONS	DESCRIPTION	DATE	BY	APP.
1	ADD ADDITIONAL CHORE LINE	3-13-75	CL							

LBC&W SOUTH CAROLINA

PROJECT ARCHITECT
 ARCHITECTURAL DESIGN
 ENGINEER
 SPECIFICATIONS

APPROVALS

DRAWN BY _____ CHECKED BY _____ FINAL APPROVAL _____

PATRIOT'S POINT
 CHARLESTON, SOUTH CAROLINA

DATE: 17 FEB. 1975 FILE NO. P-152

DRAWING NUMBER P-152-B1-K1

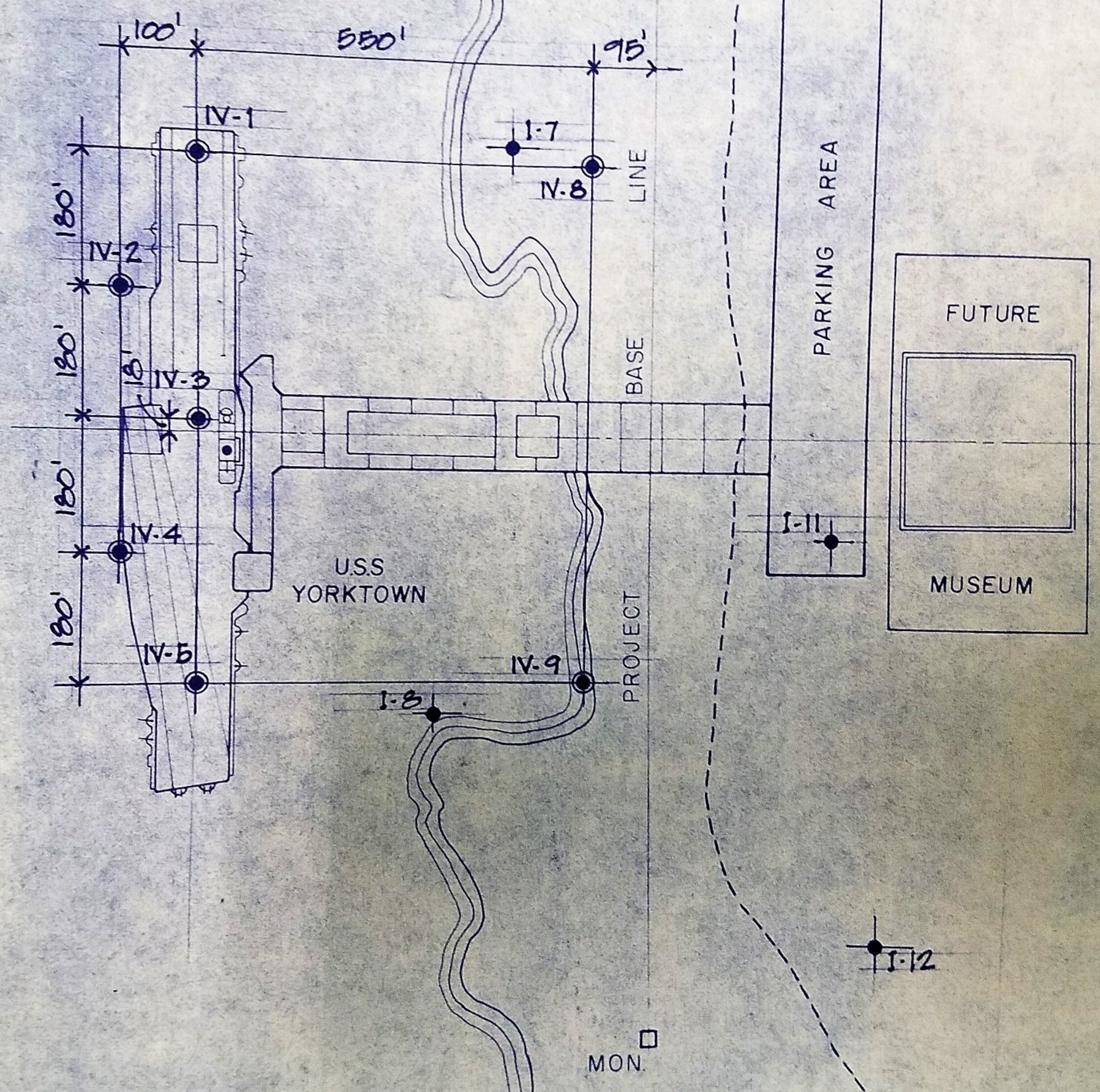
SHEET TITLE: BORING LOCATION PLAN

SITE DEVELOPMENT

B-1

R

1-10



III-3

I-12

MON. □

FUTURE
MUSEUM

PARKING AREA

BASE LINE

USS YORKTOWN

100'

550'

95'

180'

180'

180'

180'

180'

180'

IV-1

IV-2

IV-3

IV-4

IV-5

I-7

IV-8

I-8

IV-9

I-11

I-12